

BANGOR, MAINE

AL-39 (FAA)

19171

WAAS CH 78007 W33A	APP CRS 330°	Rwy Idg 11440 TDZE 163 Apt Elev 192
--	------------------------	--

RNAV (GPS) RWY 33
BANGOR INTL (BGR)

RNP APCH.

T Circling NA northeast of Rwy 15 and 33. For uncompensated Baro-VNAV systems, LNAV/VNAV NA below -18°C or above 54°C. For inop ALS, increase LPV Cat E visibility to RVR 4000, LNAV/VNAV Cat E visibility to RVR 5500, and LNAV Cat E visibility to 1¼ SM.

A **RVR 1800 authorized with use of FD or AP or HUD to DA.

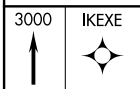
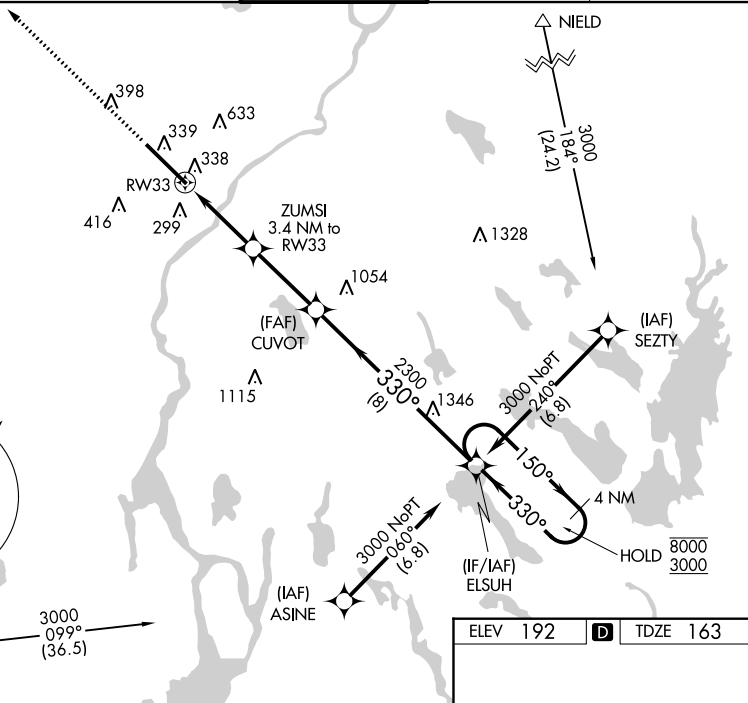
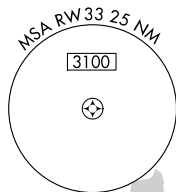
ASR

MALSR
A5

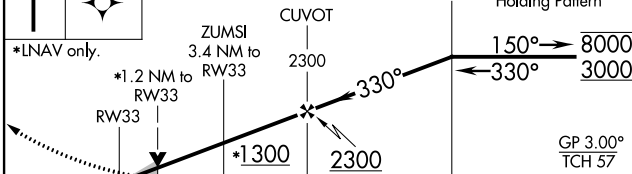
MISSED APPROACH:
Climb to 3000 direct
IKXE and hold.

ATIS 127.75	BANGOR APP CON 118.925 239.3	BANGOR TOWER 120.7 233.7	GND CON 121.9 348.6	CLNC DEL 135.9 348.6
----------------	---------------------------------	-----------------------------	------------------------	-------------------------

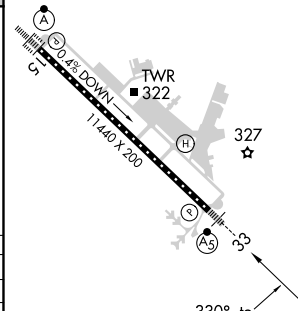
MISSED APCH FIX



	*LNAV only.
--	-------------



	1.2	2.2 NM	3.1 NM	8 NM		
CATEGORY	A	B	C	D	E	
LPV DA**	363/24 200 (200-½)					
LNAV/ VNAV DA	519/30 356 (400-¾)					
LNAB MDA	600/24 437 (500-½)		600/40 437 (500-¾)			
C CIRCLING	640-1 448 (500-1)	720-1 528 (600-1)	740-1½ 548 (600-1½)	820-2 628 (700-2)	880-2½ 688 (700-2½)	



TDZ/CL Rwy 15
HIRL Rwy 15-33

BANGOR, MAINE

Amdt 1A 20JUN19

44°48'N-68°50'W

BANGOR INTL (BGR)

RNAV (GPS) RWY 33

NE-1, 03 DEC 2020 to 31 DEC 2020