

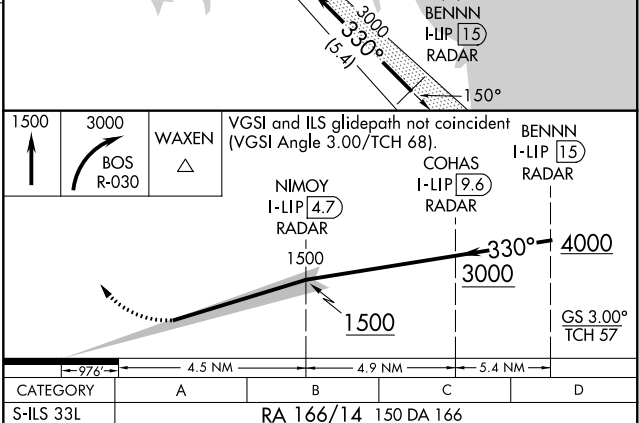
**ILS RWY 33L (SA CAT I)**  
GENERAL EDWARD LAWRENCE LOGAN INTL (BOS)

**MISSED APPROACH:** Climb to 1500 then climbing right turn to 3000 on BOS VOR/DME R-030 to WAXEN INT/BOS 14 DME and hold.

[illegible]

## RADAR REQUIRED

TDZ/CL Rwy 4R, 15R and 33L  
REIL Rwy 4L, 27 and 32  
MIRL Rwy 15L-33R  
HIRL Rwy 4L-22R, 4R-22L,  
9-27, 14-32 and 15R-33L



SA CATEGORY I - SPECIAL AIRCREW  
& AIRCRAFT CERTIFICATION REQUIRED