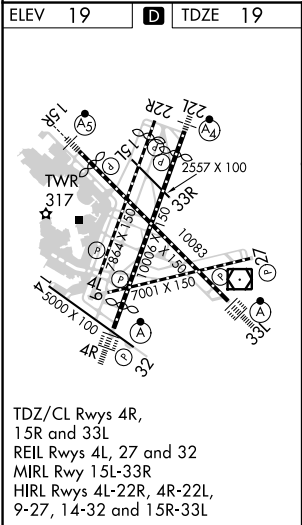
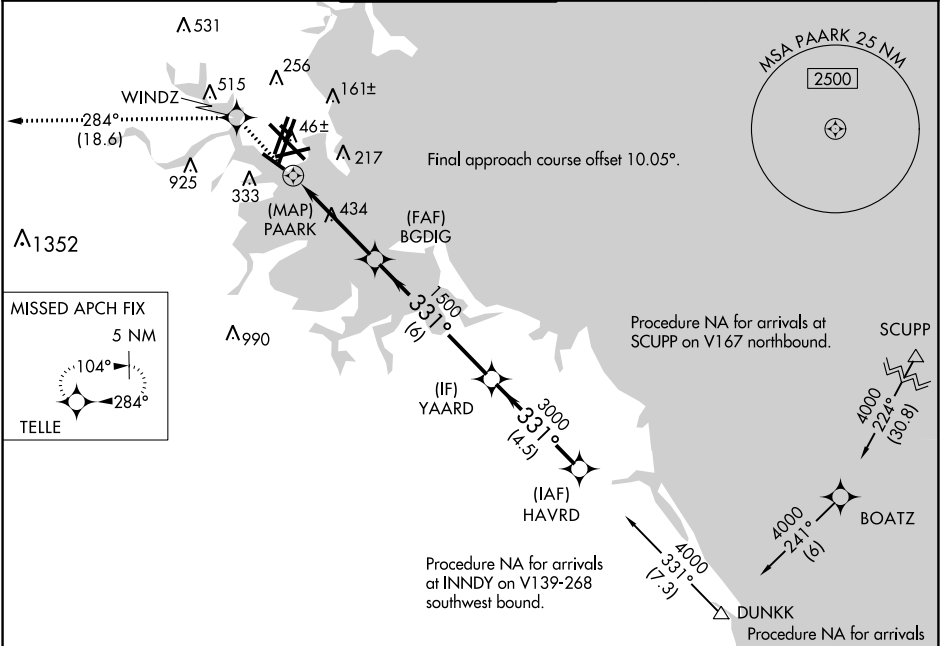


APP CRS	Rwy ldg	5000
331°	TDZE	19
	Apt Elev	19

RNAV (GPS) RWY 32

GENERAL EDWARD LAWRENCE LOGAN INTL (BOS)

<div><div></div><div></div></div>	DME/DME RNP-0.3 NA. Circling NA to Rwy 14. Circling NA for Cats C and D west of Rwy 4L and 15R.			MISSED APPROACH: Climb to 3000 direct WINDZ and on track 284° to TELLE and hold.		
	D-ATIS 135.0	BOSTON APP CON 120.6 263.1	BOSTON TOWER 128.8 257.8 (WEST) 132.225 257.8 (EAST)	GND CON 121.9 121.75	CLNC DEL 121.65 257.8	CPDLC



ELEV	19	D	TDZE	19
<div>Procedure NA for arrivals at WOONS on V3-16 southwest bound.</div> <div>Procedure NA for arrivals at DUNKK on V141 southeast bound.</div> <div>Procedure NA for arrivals at INNDY on V139-268 southwest bound.</div> <div>Procedure NA for arrivals at SCUPP on V167 northbound.</div>				
<div>WINDZ</div> <div>tr 284°</div> <div>TELLE</div> <div>1.9 NM to PAARK</div> <div>PAARK</div> <div>2.91°</div> <div>TCH 45</div> <div>RW32</div> <div>0.5 1.9 2.3 NM</div> <div>6 NM</div> <div>4.5 NM</div> <div>7.3 NM</div>				
CATEGORY	A	B	C	D
LNAV MDA	820-1 801 (900-1)	820-1½ 801 (900-1½)	820-2½	801 (900-2½)
CIRCLING	960-1½ 941 (1000-1½)	1060-1½ 1041 (1100-1½)	820-2½	801 (900-2½)

NE-1, 03 DEC 2020 to 31 DEC 2020

NE-1, 03 DEC 2020 to 31 DEC 2020