

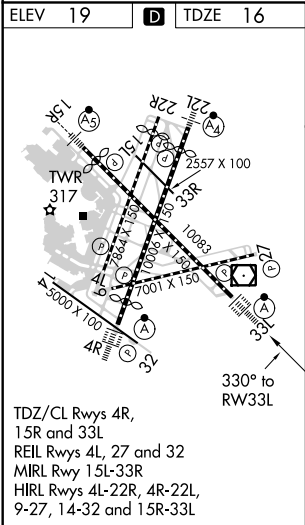
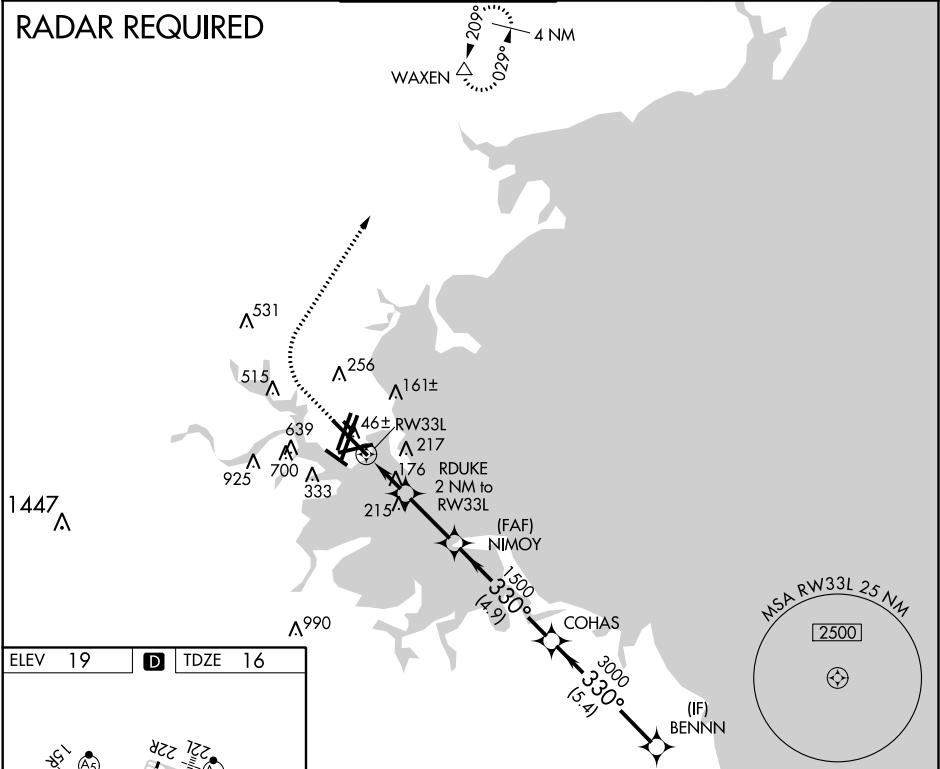
WAAS CH <b>69525</b> <b>W33A</b>	APP CRS <b>330°</b>	Rwy Idg TDZE <b>16</b> Apt Elev <b>19</b>	<b>10083</b>
--	------------------------	---	--------------

RNAV (GPS) RWY 33L

GENERAL EDWARD LAWRENCE LOGAN INTL (BOS)

<b>▼</b> DME/DME RNP-0.3 NA. Circling NA to Rwy 14. Circling NA for Cats C and D west of Rwys 4L and 15R. For uncompensated Baro-VNAV systems, LNAV/VNAV NA below -14°C (7°F) or above 54°C (130°F).	<b>ALSF-2</b>	<b>MISSED APPROACH:</b> Climb to 600 then climbing right turn to 3000 direct WAXEN and hold.
--	---------------	--

D-ATIS <b>135.0</b>	BOSTON APP CON <b>120.6 263.1</b>	BOSTON TOWER <b>128.8 257.8 (WEST)</b> <b>132.225 257.8 (EAST)</b>	GND CON <b>121.9 121.75</b>	CLNC DEL <b>121.65 257.8</b>	CPDLC
------------------------	--------------------------------------	--	--------------------------------	---------------------------------	-------



600	3000	WAXEN	VGSI and RNAV glidepath not coincident (VGSI Angle 3.00/TCH 68).	BENNN
↑	↶	△		
*LNAV only	*1.1 NM to RWY33L	RDUKE 2 NM to RWY33L	NIMOY 1500	COHAS 330°
↶	↶	↶	↶	↶
1.1 NM	0.9 NM	2.5 NM	4.9 NM	5.4 NM
CATEGORY	A	B	C	D
LPV DA	216/18	200 (200-½)		
LNAV/VNAV DA	324/24	308 (400-½)		
LNAV MDA	440/24	424 (500-½)	440/40	424 (500-¾)
CIRCLING	960-1¼ 941 (1000-1¼)	1060-1½ 1041 (1100-1½)	640-1¾ 621 (700-1¾)	640-2 621 (700-2)