
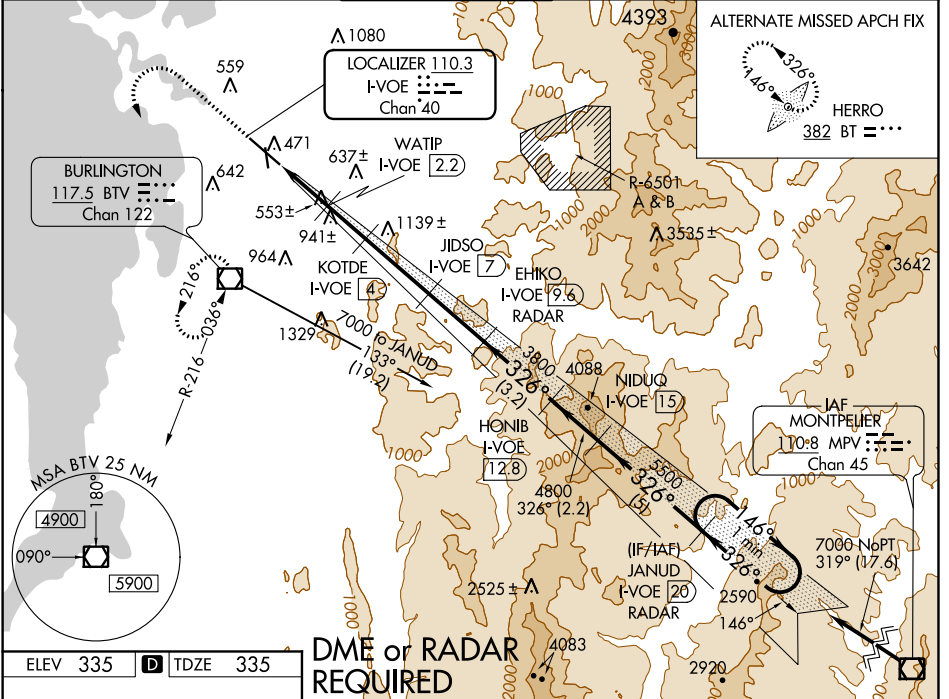


LOC/DME I-VOE 110.3 Chan 40	APP CRS 326°	Rwy Idg TDZE Apt Elev	7819 335 335
---	------------------------	-----------------------------	---

ILS or LOC/DME RWY 33

BURLINGTON INTL (BTV)

<div><div><div>V</div><div>A</div><div>-10°C</div></div><div>Circling to Rwy 1 NA at night. Inoperative table does not apply to S-LOC 33 Cats C, D, and E. Inoperative table does not apply to S-ILS all Cats. Autopilot coupled approaches NA.</div></div>		<div><div>MALSF</div><div></div></div> <div>MISSED APPROACH: Climb to 1200 then climbing left turn to 2800 direct BTV VOR/DME and hold, continue climb-in-hold to 2800.</div>			
<div>ATIS</div> <div>123.8 269.9</div>	<div>BURLINGTON APP CON ★</div> <div>121.1 278.8</div>	<div>BURLINGTON TOWER ★</div> <div>118.3 (CTAF) 0 257.8</div>	<div>GND CON</div> <div>126.3 348.6</div>	<div>CLNC DEL</div> <div>119.15</div>	<div>UNICOM</div> <div>122.95</div>



ELEV 335	D	TDZE 335
----------	---	----------

MIRL Rwy 1-19 U
HIRL Rwy 15-33 D

FAF to MAP 9.8 NM

Knots	60	90	120	150	180
Min:Sec	9:48	6:32	4:54	3:55	3:16

1200 2800 BTV		* LOC only		WATIP I-VOE 2.2		JIDSO I-VOE 7		EHIKO I-VOE 9.6		HONIB I-VOE 12.8		NIDUQ I-VOE 15		JANUD I-VOE 20		RADAR		One Minute Holding Pattern	
I-VOE DME Ant.		* I-VOE 1		KOTDE I-VOE 4		JIDSO I-VOE 7		EHIKO I-VOE 9.6		HONIB I-VOE 12.8		NIDUQ I-VOE 15		JANUD I-VOE 20		RADAR		GS 3.20° TCH 55	
0.2		1.2		1.8 NM		3 NM		2.6 NM		3.2 NM		2.2 NM		5 NM					
CATEGORY		A		B		C		D		E									
S-ILS 33		535/40		200 (200-34)		585/50		250 (300-1)		NA									
S-LOC 33		820/40		485 (500-34)		820/60		485 (500-14)		820-11/2		485 (500-11/2)		820-13/4		485 (500-13/4)			
CIRCLING		840-1		505 (600-1)		860-1		525 (600-1)		1200-2 1/2		865 (900-2 1/2)		1380-3		1045 (1100-3)			

NE-1, 03 DEC 2020 to 31 DEC 2020

NE-1, 03 DEC 2020 to 31 DEC 2020