

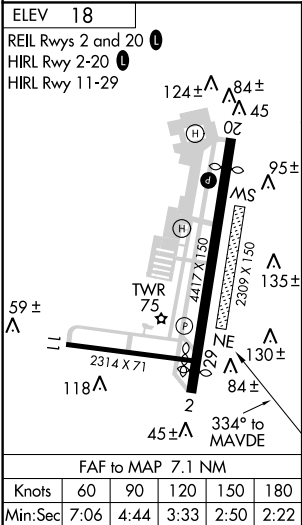
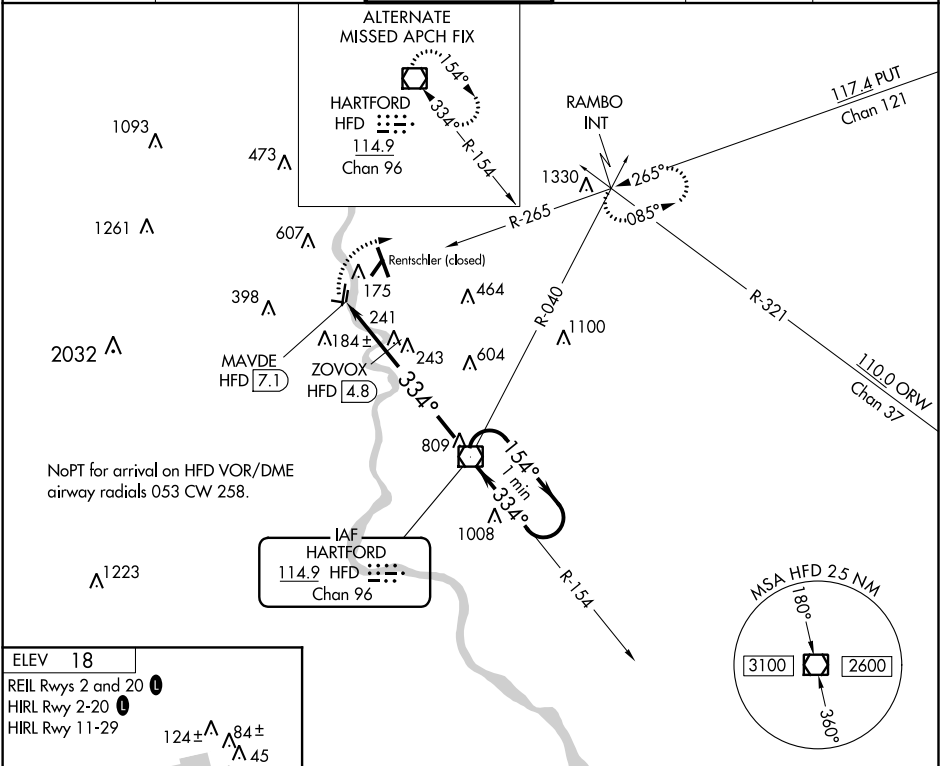
VOR/DME HFD	APP CRS	Rwy Idg	N/A
114.9	334°	TDZE	N/A
Chan 96		Apt Elev	18

VOR-A

HARTFORD-BRAINARD (HF'D)

<p>▼ Helicopter visibility reduction below 1 SM NA. When Rwy 2 VGSi inop, Circling to Rwy 2 NA at night. Circling to Rwy 11 and 29 NA at night. When Rwy 20 VGSi inop, Circling to Rwy 20 NA at night.</p>	<p>MISSED APPROACH: Climbing right turn to 2500 on heading 100° and PUT VOR/DME R-265 to RAMBO INT and hold.</p>
--	--

ATIS 126.45	YANKEE APP CON 127.8 269.325	BRAINARD TOWER ★ 119.6 (CTAF) 0 248.2	GND CON 121.6	CLNC DEL 121.6	UNICOM 122.95
-----------------------	--	---	-------------------------	--------------------------	-------------------------



NE-1, 03 DEC 2020 to 31 DEC 2020

NE-1, 03 DEC 2020 to 31 DEC 2020