

APP CRS  
168°

Rwy Idg	<b>N/A</b>
TDZE	<b>N/A</b>
Apt Elev	<b>490</b>

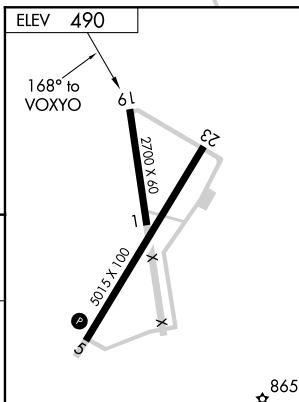
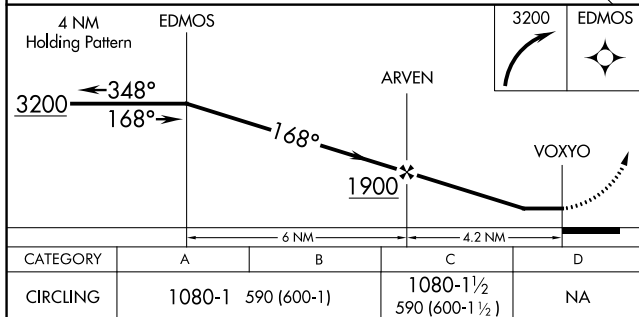
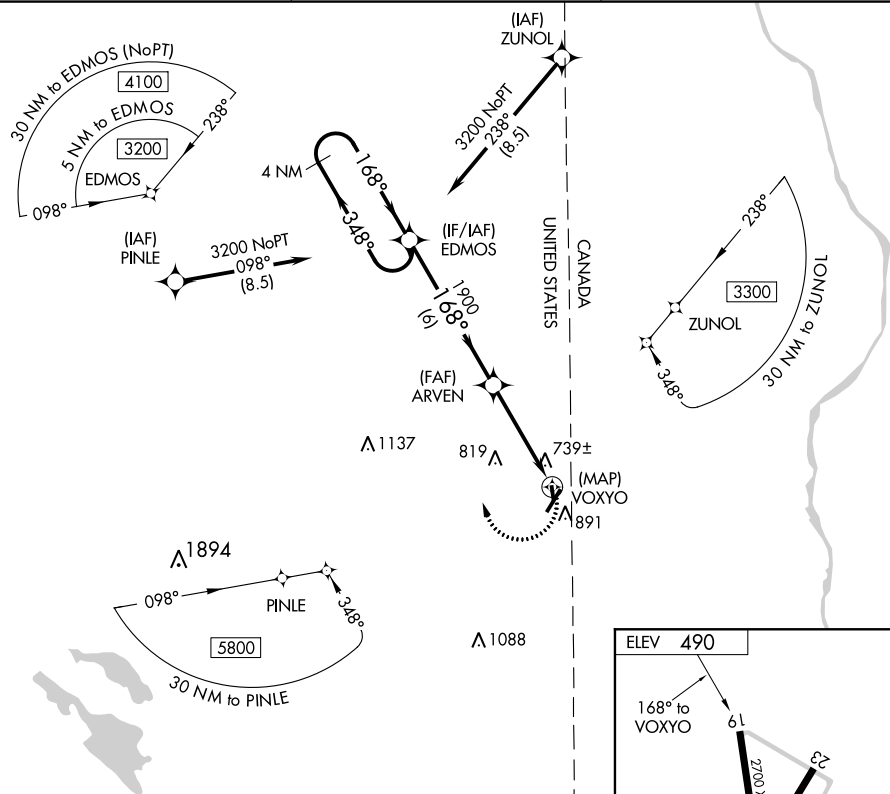
RNAV (GPS)-A  
HOULTON INTL (HUL)

When local altimeter setting not received, use Presque Isle altimeter setting and increase all MDA 100 feet; increase visibility Cat C  $\frac{1}{2}$  mile. Circling NA southeast of Rwy 5-23. DME/DME RNP-0.3 NA.

**MISSED APPROACH:** Climbing right turn to 3200 direct EDMOS and hold.

ASOS  
132.025

BOSTON CENTER  
120.25 346.4

UNICOM  
122.8 (CTAF) **L**

HOULTON, MAINE  
Orig-A 23JUN16

46°07'N-67°48'W

HOULTON INTL (HUL)  
RNAV (GPS)-A

NE-1, 03 DEC 2020 to 31 DEC 2020