

LOC/DME I-MHT <b>109.1</b> Chan 28	APP CRS <b>352°</b>	Rwy Idg TDZE Apt Elev	<b>7650</b> <b>265</b> <b>266</b>
------------------------------------------	------------------------	-----------------------------	-----------------------------------------

ILS RWY 35 (CAT II & III)  
MANCHESTER (MHT)

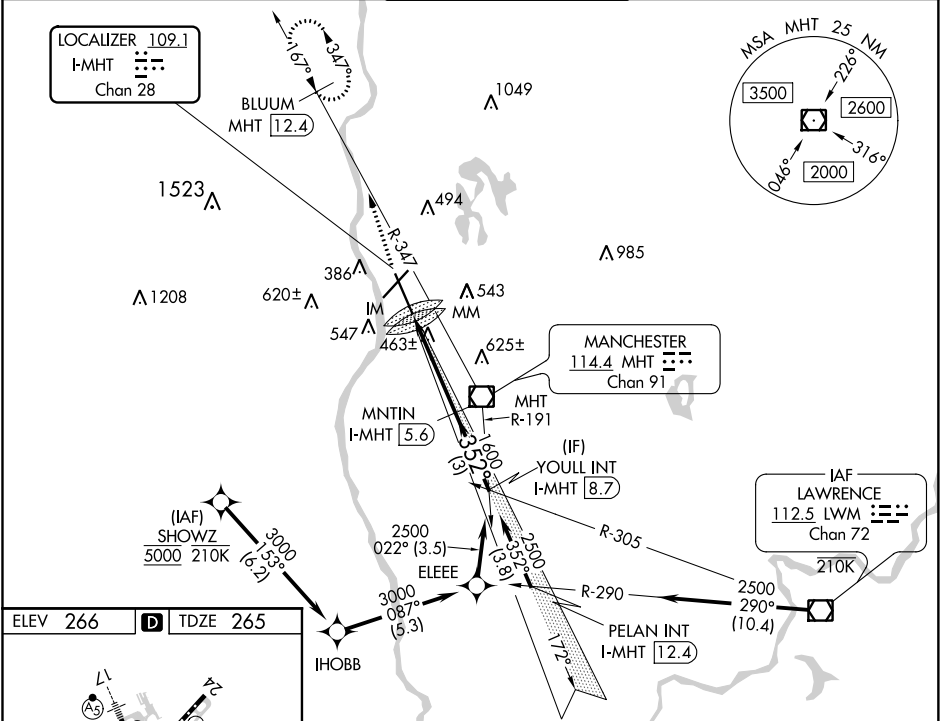
From SHOWZ: RNAV 1-DME/DME/IRU or GPS required for procedure entry.  
DME required.

ALSF-2

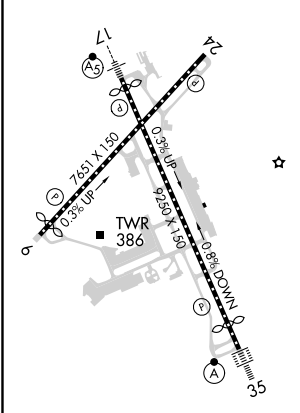
MISSED APPROACH: Climb to 3000  
on heading 355° and MHT VOR/DME  
R-347 to BLUUM/MHT 12.4 DME and  
hold, continue climb-in-hold to 3000.



ATIS <b>119.55</b>	BOSTON APP CON <b>124.9 269.075</b>	MANCHESTER TOWER <b>121.3 239.025</b>	GND CON <b>121.9</b>	CLNC DEL <b>135.9</b>
-----------------------	----------------------------------------	------------------------------------------	-------------------------	--------------------------



ELEV 266	D	TDZE 265
----------	---	----------



3000 ↑ hdg 355°	MHT R-347	BLUUM MHT 12.4	VGSI and ILS glidepath not coincident (VGSI Angle 3.00°/TCH 68).	YOUULL INT I-MHT 8.7
IM 410	MM 509	MNTIN I-MHT 5.6	1600	2500
1222'	0.4 NM	3.6 NM	3 NM	GS 3.00° TCH 55
CATEGORY	A	B	C	D
S-ILS 35	CAT II RA 101/12 100 DA 365			
S-ILS 35	CAT III RVR 07			

REIL Rwy 6 and 24  
TDZ/CL Rwy 17 and 35  
HIRL Rwy 6-24 and 17-35

CATEGORY II & III ILS - SPECIAL AIRCREW  
& AIRCRAFT CERTIFICATION REQUIRED