

APP CRS	Rwy Idg	8914
171°	TDZE	229
	Apt Elev	266

RNAV (RNP) Z RWY 17
MANCHESTER (MHT)

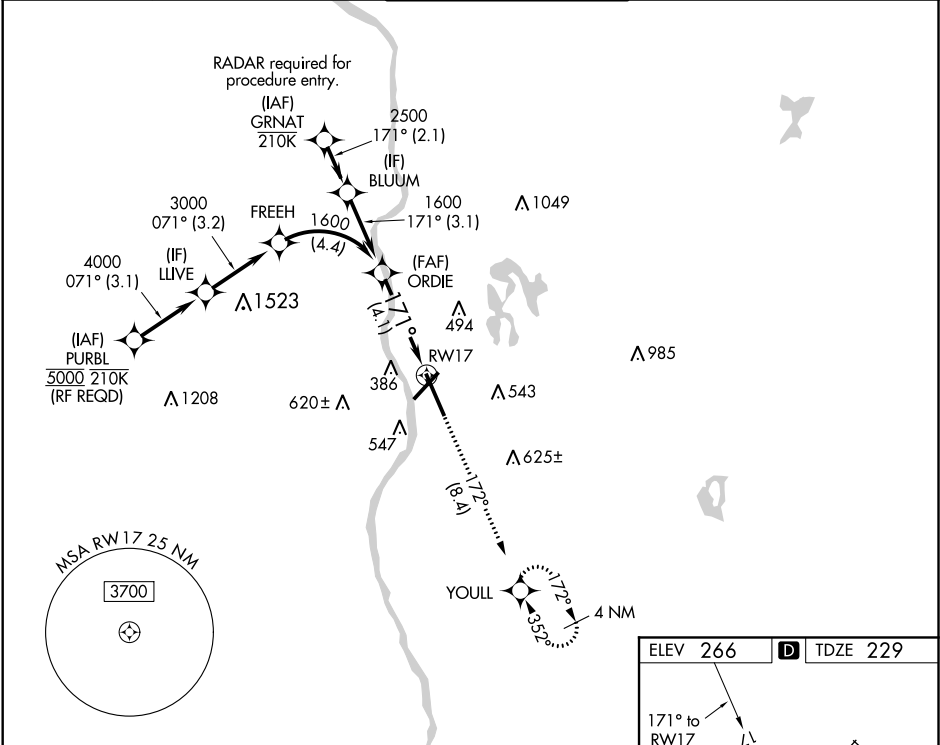
▼ For uncompensated Baro-VNAV systems, procedure NA below -20°C (-4°F) or above 48°C (118°F). When local altimeter setting not received, procedure NA. GPS required. For inop MALS, increase RNP 0.11 all Cats visibility to RVR 6000, RNP 0.26 all Cats visibility to 1¾ miles, and RNP 0.30 all Cats visibility to 2 miles.

MALS

AS

MISSED APPROACH:
Climb to 2100 on track 172° to YOULL and hold.

ATIS 119.55	BOSTON APP CON 124.9 269.075	MANCHESTER TOWER 121.3 239.025	GND CON 121.9	CLNC DEL 135.9
----------------	---------------------------------	-----------------------------------	------------------	-------------------



VGSI and RNAV glidepath not coincident (VGSI Angle 3.10/TCH 67).

ORDIE

1600

171°

GP 3.10° TCH 49

4.1 NM

2100

tr 172°

YOULL

See planview for multiple IF locations.

CATEGORY	A	B	C	D
RNP 0.11 DA		604/40	375 (400-¾)	
RNP 0.26 DA		761/60	532 (500-1¼)	
RNP 0.30 DA		835-1½	606 (600-1½)	

AUTHORIZATION REQUIRED

ELEV 266

TDZE 229

171° to RWY 17

AS

7651 X 150

0.3% UP

9250 X 150

0.3% DOWN

TWR 386

35

REIL Rwy 6 and 24
TDZ/CL Rwy 17 and 35
HIRL Rwy 6-24 and 17-35

NE-1, 03 DEC 2020 to 31 DEC 2020

NE-1, 03 DEC 2020 to 31 DEC 2020