

WAAS CH 93807 W17A	APP CRS 171°	Rwy Idg TDZE 229 Apt Elev 266	8914
--	------------------------	---	-------------

RNAV (GPS) Y RWY 17

MANCHESTER (MHT)

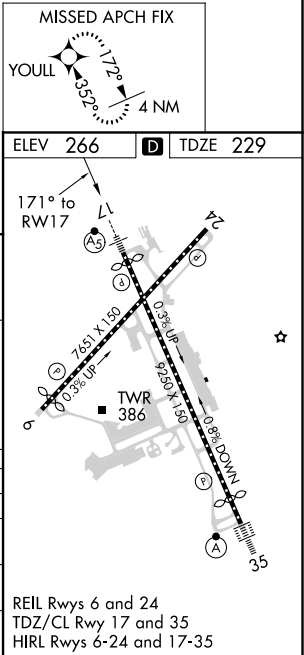
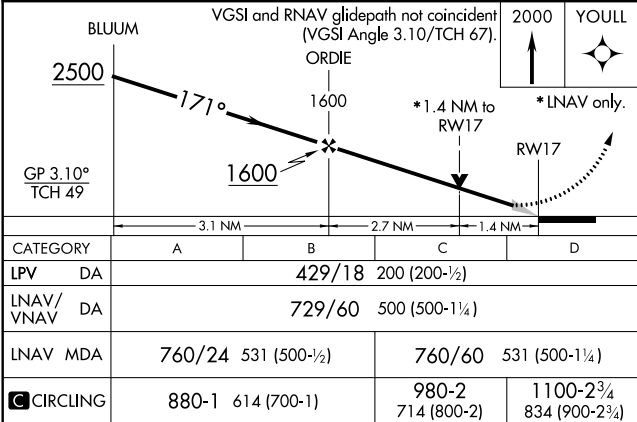
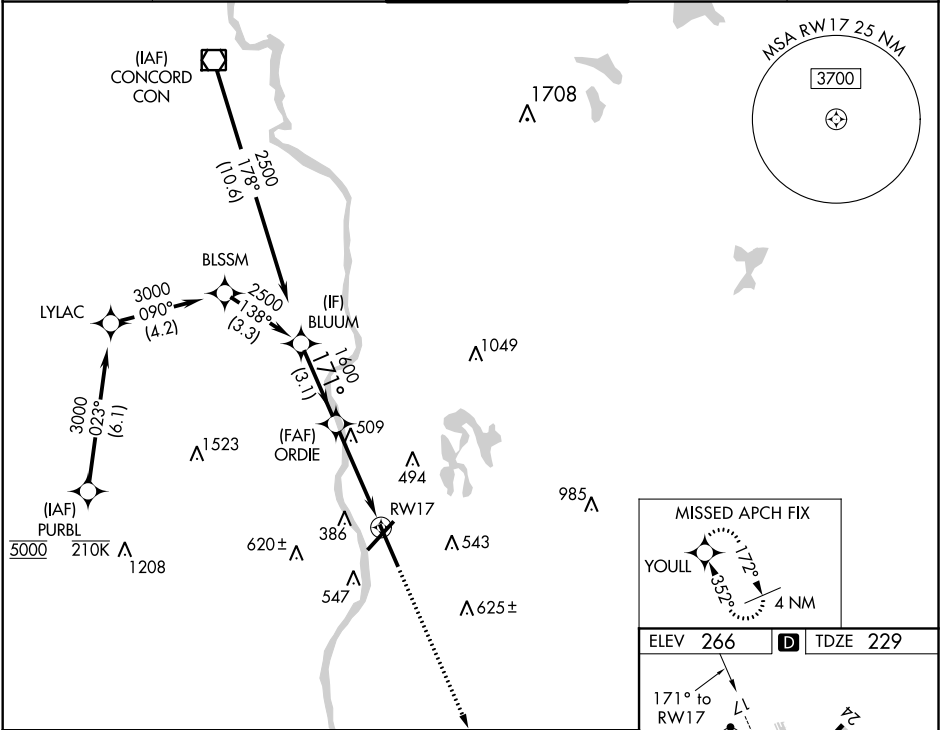
⚠ For uncompensated Baro-VNAV systems, LNAV/VNAV NA below -20°C (-4°F) or above 48°C (118°F). DME/DME RNP-0.3 NA. When local altimeter setting not received, use Nashua altimeter setting: increase LPV DA to 461; increase LNAV/VNAV DA to 761; increase all MDA 40 feet and LNAV Cat C/D visibility ½ mile and Circling Cat C visibility ¼ mile. VDP and Baro-VNAV NA when using Nashua altimeter setting.

MALSR

MISSED APPROACH:

Climb to 2000 direct YOULL and hold.

ATIS 119.55	BOSTON APP CON 124.9 269.075	MANCHESTER TOWER 121.3 239.025	GND CON 121.9	CLNC DEL 135.9
-----------------------	--	--	-------------------------	--------------------------



NE-1, 03 DEC 2020 to 31 DEC 2020

NE-1, 03 DEC 2020 to 31 DEC 2020