

WAAS CH 53628 W29A	APP CRS 287°	Rwy Idg TDZE Apt Elev	4713 408 408
--	------------------------	-----------------------------	---

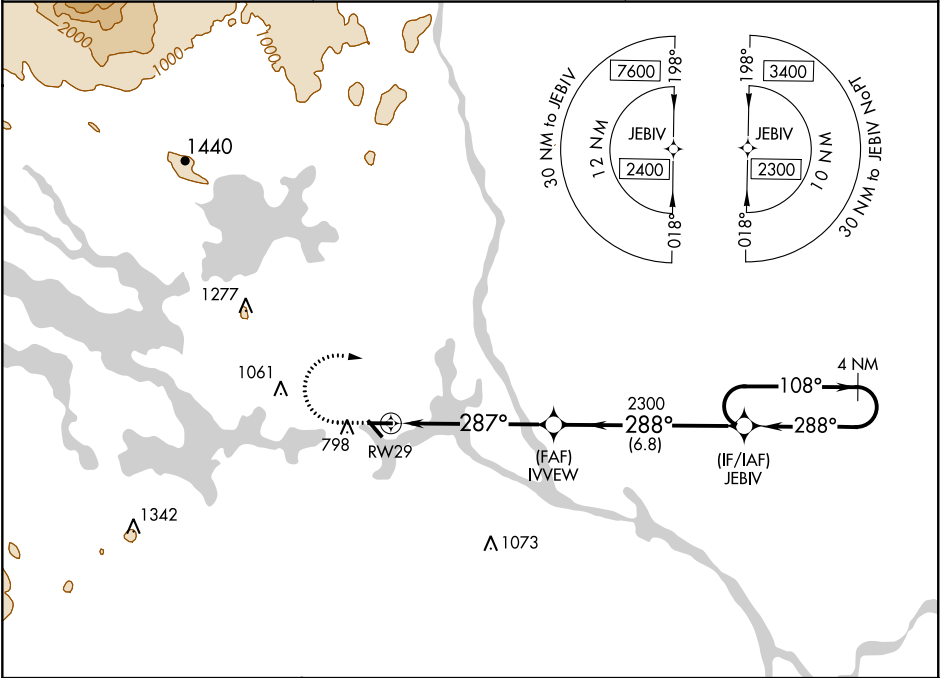
RNAV (GPS) RWY 29

MILLINOCKET MUNI (MLT)

Baro-VNAV NA when using Houlton altimeter setting. For uncompensated Baro-VNAV systems, LNAV/VNAV NA below -15°C (5°F) or above 41°C (105°F). DME/DME RNP-0.3 NA. Helicopter visibility reduction below ¾ SM NA. When local altimeter setting not received, use Houlton altimeter setting and increase all DA and all MDA 120 feet; increase LPV and LNAV/VNAV all Cats and LNAV Cat C/D visibility ¾ mile, and Circling Cat A/B visibility ½ mile and Cat C/D visibility ½ mile. Night landing: Rwy 11, 34 NA.

MISSED APPROACH:
Climb to 920 then climbing right turn to 2300 direct JEBIV and hold.

ASOS 135.225	BOSTON CENTER 120.25 346.4	UNICOM 122.8 (CTAF)
------------------------	--------------------------------------	-------------------------------



ELEV 408

TDZE 408

920

2300

JEBIV

4713 X 99

444

4000 X 100

0.5% UP

29

287° to RW29

REIL Rwy 29

MIRL Rwy 11-29

* LNAV only

RW29

1.5 NM to RW29

IVVEW 2300

JEBIV

4 NM Holding Pattern

GP 3.00°

TCH 51

1.5 NM

4.3 NM

6.8 NM

CATEGORY	A	B	C	D
LPV DA	697-1		289 (300-1)	
LNAV/VNAV DA	815-1 3/8		407 (400-1 3/8)	
LNAV MDA	920-1	512 (600-1)	920-1 1/2	512 (600-1 1/2)
CIRCLING	1100-1	692 (700-1)	1100-2 692 (700-2)	1100-2 1/4 692 (700-2 1/4)

MILLINOCKET, MAINE
Amdt 1B 30APR15

45°39'N-68°41'W

MILLINOCKET MUNI (MLT)
RNAV (GPS) RWY 29