


LOC/DME I-GCS	APP CRS	Rwy Idg	7200
109.9	290°	TDZE	56
Chan 36		Apt Elev	76

ILS or LOC RWY 29
PORTLAND INTL JETPORT (PWM)

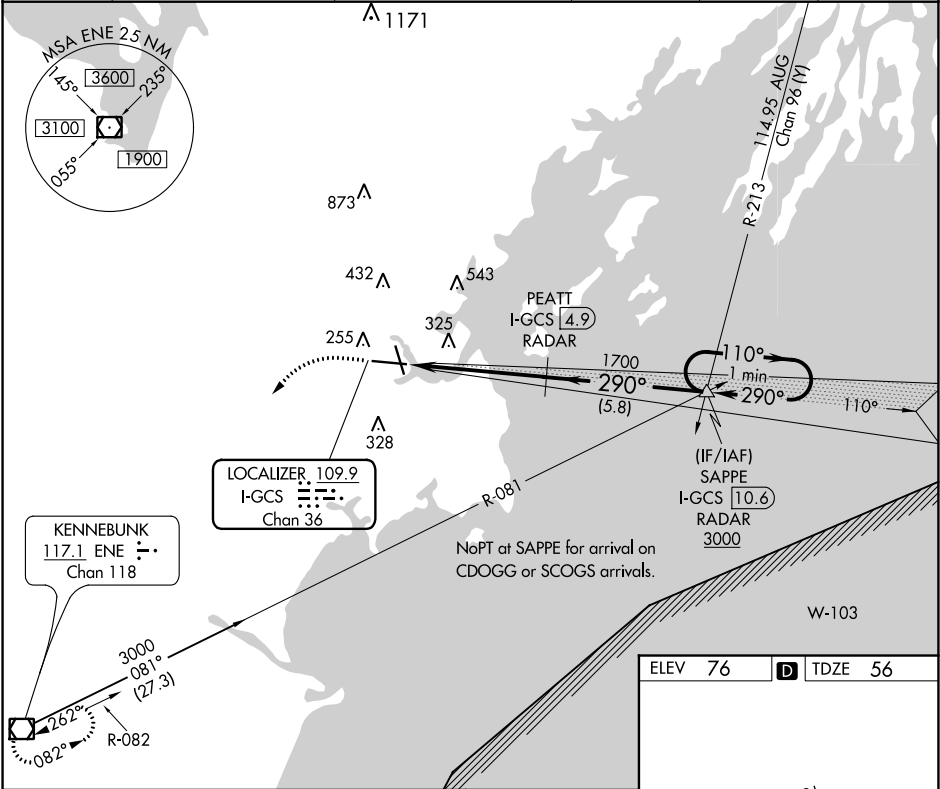
V **A** ** RVR 1800 authorized with use of FD or AP or HUD to DA.
DME or RADAR required.


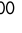

MAISR



MISSED APPROACH: Climb to 700 then climbing left turn to 3000 direct ENE VOR/DME and hold.

ATIS 119.05	PORTLAND APP CON ★ 119.75 269.35	PORTLAND TOWER ★ 120.9 0 (CTAF) 257.8	GND CON 121.9	CLNC DEL 121.9	UNICOM 122.95
-----------------------	--	---	-------------------------	--------------------------	-------------------------



	 700	 3000	 ENE	PEATT I-GCS 4.9 RADAR	SAPPE I-GCS 10.6 RADAR	One Minute Holding Pattern
* LOC only	I-GCS DME ANTENNA	I-GCS 1.4	1700	1700	110°	3000
	I-GCS 0.2		290°	290°	110°	3000
			1.5 NM	3.5 NM	5.8 NM	GS 3.00° TCH 50
CATEGORY	A	B	C	D		
S-ILS 29**		256/24 200 (200-½)				
S-LOC 29	580/24 524 (600-½)		580/55 524 (600-1)			
CIRCLING	620-1 544 (600-1)	640-1 564 (600-1)	740-1¾ 664 (700-1¾)	860-2½ 784 (800-2½)		

ELEV 76 TDZE 56

TDZ/CL Rwy 11
MIRL Rwy 18-36
HIRL Rwy 11-29
REIL Rws 18 and 36

FAF to MAP 5.1 NM

Knots	60	90	120	150	180
Min:Sec	5:06	3:24	2:33	2:02	1:42

NE-1, 03 DEC 2020 to 31 DEC 2020

NE-1, 03 DEC 2020 to 31 DEC 2020