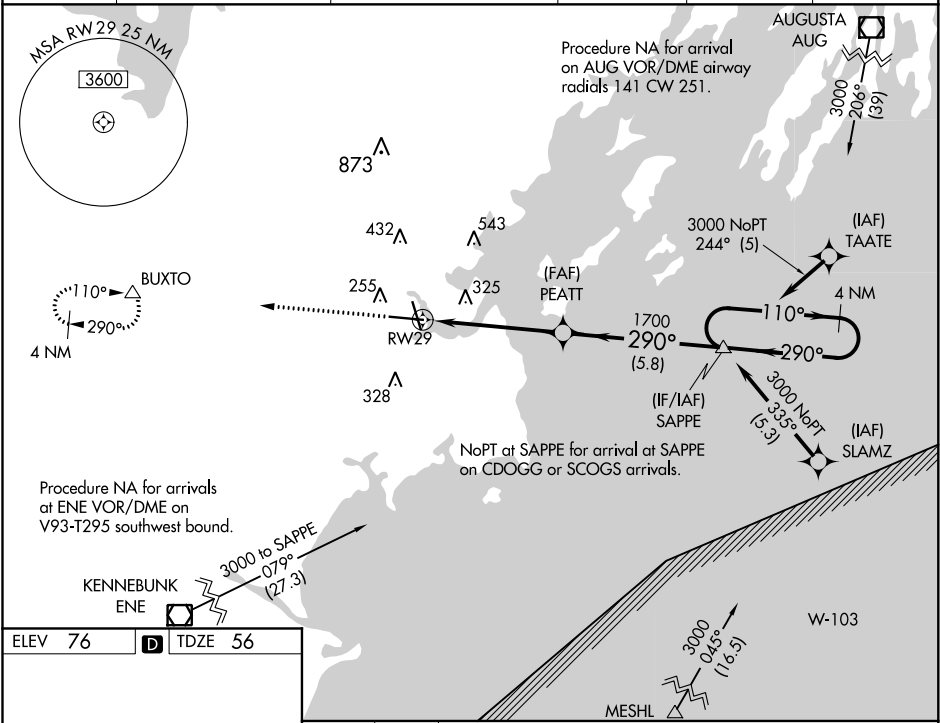


WAAS CH 65626 W29A	APP CRS 290°	Rwy Idg 7200 TDZE 56 Apt Elev 76
--	------------------------	---

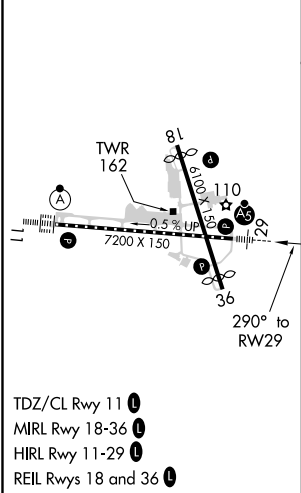
RNAV (GPS) RWY 29
PORTLAND INTL JETPORT (PWM)

RNP APCH. For uncompensated Baro-VNAV systems, LNAV/VNAV NA below -18°C or above 54°C. For inop MALS, increase LNAV/VNAV all Cats visibility to 1½ mile, increase LNAV Cat C/D visibility to 1¾ mile. **RVR 1800 authorized with use of FD or AP or HUD to DA.			MALS A5	MISSED APPROACH: Climb to 3000 direct BUXTO and hold, continue climb-in-hold to 3000.	
--	--	--	------------	---	--

ATIS 119.05	PORTLAND APP CON ★ 119.75 269.35	PORTLAND TOWER ★ 120.9 0 (CTAF) 257.8	GND CON 121.9	CLNC DEL 121.9	UNICOM 122.95
-----------------------	--	---	-------------------------	--------------------------	-------------------------



ELEV 76	D	TDZE 56
---------	---	---------



<div>3000 ↑ BUXTO △</div>		<div>4 NM Holding Pattern</div>			
* LNAV only		* 1.5 NM to RW29			
<div>RW29</div>		<div>PEATT 1700</div>			
<div>1.5 NM</div>		<div>3.5 NM</div>		<div>5.8 NM</div>	
CATEGORY		A	B	C	D
LPV	DA	** 256/24 200 (200-½)			
LNAV/VNAV	DA	567-1⅜ 511 (500-1⅜)			
LNAV	MDA	580/24	524 (600-½)	580/55	524 (600-1)
CIRCLING		620-1 544 (600-1)	640-1 564 (600-1)	740-1¾ 664 (700-1¾)	860-2½ 784 (800-2½)

NE-1, 03 DEC 2020 to 31 DEC 2020

NE-1, 03 DEC 2020 to 31 DEC 2020