

PORTLAND APP CON ★
119.75 269.35
ATIS
119.05

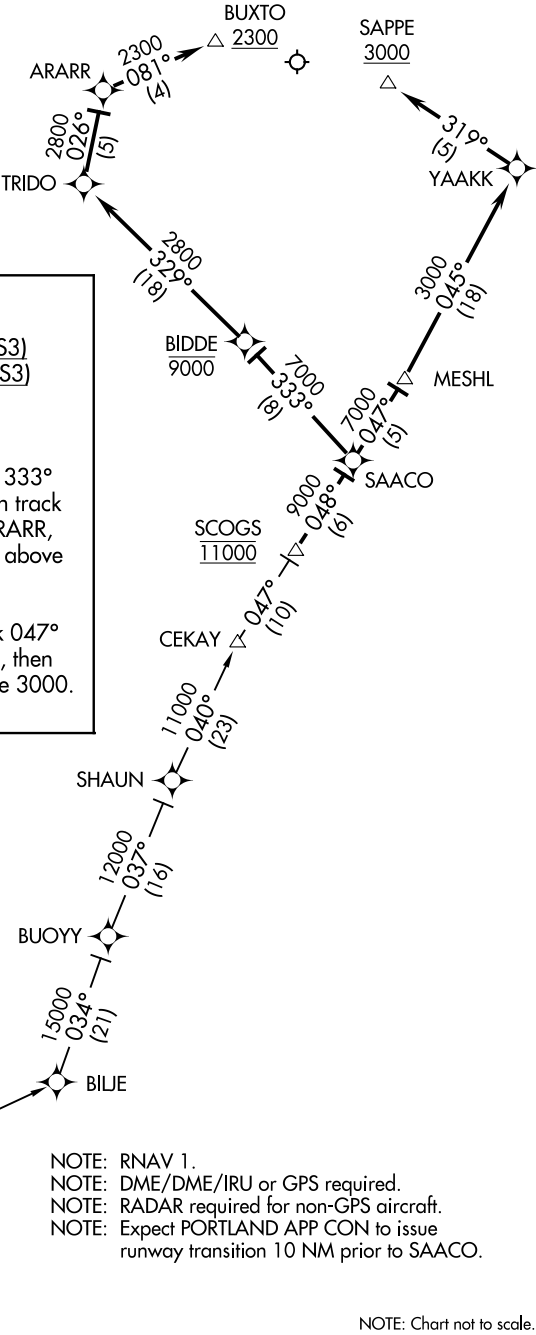
ARRIVAL ROUTE DESCRIPTION

BRIDGEPORT TRANSITION (BDR.SCOGS3)
CALVERTON TRANSITION (CCC.SCOGS3)

From SCOGS on track 048° to SAACO.

Landing Rwy 11: From SAACO on track 333° to cross BIDDE at or below 9000, then on track 329° to TRIDO, then on track 026° to ARARR, then on track 081° to cross BUXTO at or above 2300. Expect ILS or LOC Rwy 11.

Landing Rwy 29: From SAACO on track 047° to MESHL, then on track 045° to YAAKK, then on track 319° to cross SAPPE at or above 3000. Expect ILS or LOC to Rwy 29.



NOTE: RNAV 1.
NOTE: DME/DME/IRU or GPS required.
NOTE: RADAR required for non-GPS aircraft.
NOTE: Expect PORTLAND APP CON to issue runway transition 10 NM prior to SAACO.

NOTE: Chart not to scale.

NE-1, 03 DEC 2020 to 31 DEC 2020

NE-1, 03 DEC 2020 to 31 DEC 2020