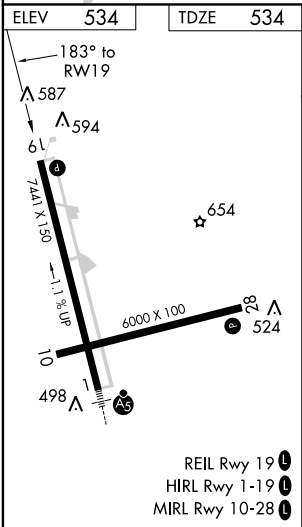
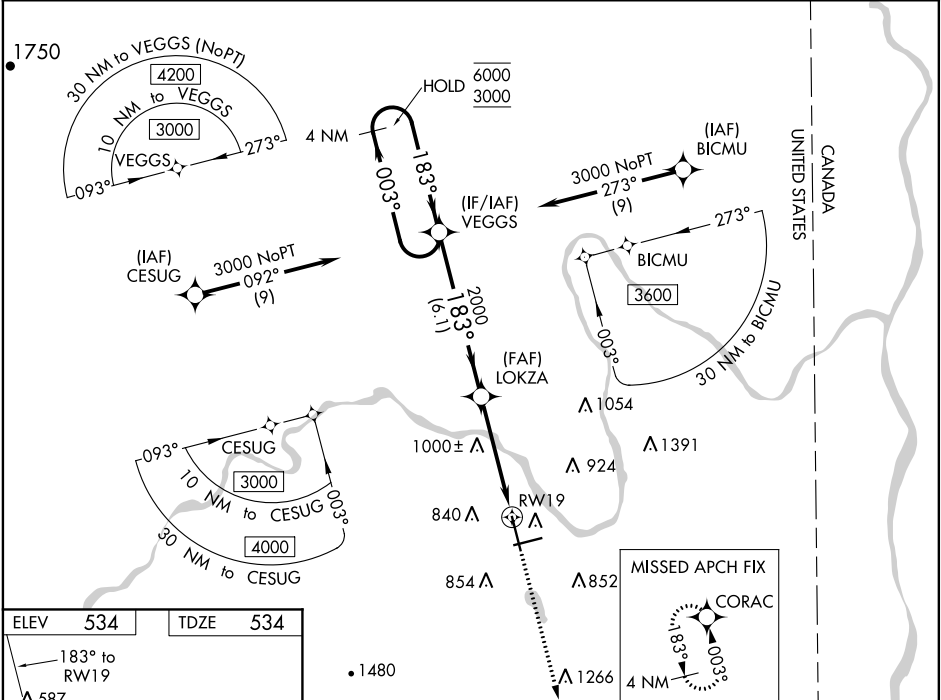


WAAS CH 99712 W19A	APP CRS 183°	Rwy Idg TDZE 534 Apt Elev 534
--	------------------------	---

RNAV (GPS) RWY 19

PRESQUE ISLE INTL (PQI)

RNP APCH.		MISSED APPROACH: Climb to 3400 direct CORAC and hold.		
<div><div><div></div><div></div><div></div></div><div>Rwy 19 helicopter visibility reduction below ¾ SM NA. For uncompensated Baro-VNAV systems, LNAV/VNAV NA below -16°C or above 54°C.</div><div><div></div><div></div></div></div>				
AWOS-3PT 118.025	BOSTON CENTER 124.75 239.05	CLNC DEL 121.6	UNICOM 122.8 (CTAF)	122.6



3400 CORAC		VGSI and RNAV glidepath not coincident (VGSI Angle 3.70/TCH 50).		4 NM Holding Pattern	
*LNAV only.		*1.7 NM to RWY 19		003° → 6000 ← 183° 3000	
RWY 19		LOKZA		GP 3.00° TCH 55	
1.7 NM		2.7 NM		6.1 NM	
CATEGORY	A	B	C	D	
LPV DA	926-1⅛		392 (400-1⅛)		
LNAV/VNAV DA	1115-1¾		581 (600-1¾)		
LNAV MDA	1240-1		706 (800-1)		
CIRCLING	1240-1		706 (800-1)		
	1300-2¼		766 (800-2¼)		
		1360-2¾		826 (900-2¾)	

NE-1, 03 DEC 2020 to 31 DEC 2020

NE-1, 03 DEC 2020 to 31 DEC 2020