

LOC/DME I-ARJ <b>109.3</b> Chan <b>30</b>	APP CRS <b>227°</b>	Rwy Idg <b>8700</b> TDZE <b>50</b> Apt Elev <b>54</b>
---	------------------------	---

ILS RWY 23 (SA CAT I & II)  
THEODORE FRANCIS GREEN STATE (PVD)

DME or RADAR required for procedure entry.		
--	--	--

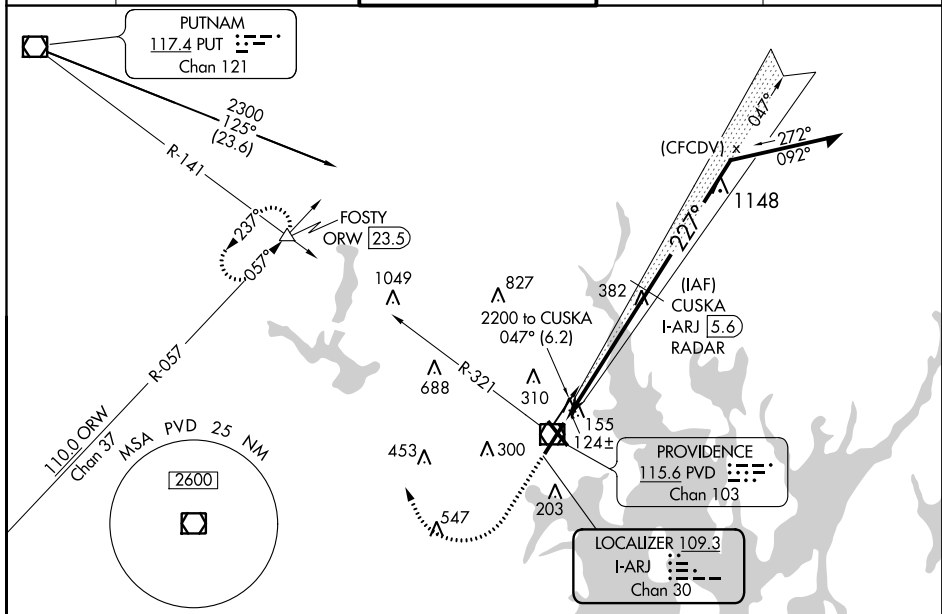
<b>T</b>	SA Cat I: Requires specific OPSPEC, MSPEC, or LOA approval and use of HUD to DH.
<b>A</b>	SA CAT II: Reduced Lighting: Requires specific OPSPEC, MSPEC, or LOA approval and use of Autoland or HUD to touchdown. Procedure NA when tower closed.

MALS

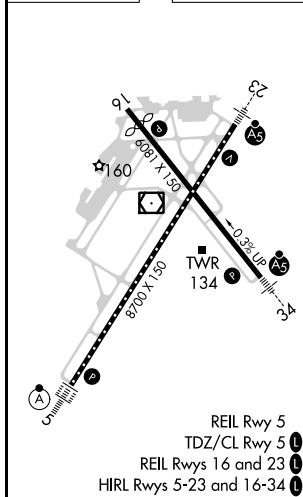


**MISSED APPROACH:** Climb to 700 then climbing right turn to 2500 on heading 350° and PVD VOR/DME R-321 to FOSTY INT/ORW 23.5 DME and hold.

D-ATIS <b>124.2</b>	PROVIDENCE APP CON ★ <b>123.675 244.875</b>	PROVIDENCE TOWER ★ <b>120.7 (CTAF) 0 257.8</b>	GND CON <b>121.9 348.6</b>	CLNC DEL <b>126.65 348.6</b>
------------------------	--	---	-------------------------------	---------------------------------



ELEV 54		TDZE 50
---------	--	---------



CATEGORY	A	B	C	D
S-ILS 23	SA CAT I	RA 163/14	150	DA 200
S-ILS 23	SA CAT II	RA 103/12	100	DA 150

SA CATEGORY I & II ILS - SPECIAL AIRCREW  
& AIRCRAFT CERTIFICATION REQUIRED