

LOC/DME I-PVD	APP CRS	Rwy Idg
<b>109.3</b>	<b>047°</b>	<b>8700</b>
Chan 30		TDZE <b>53</b>
		Apt Elev <b>54</b>

ILS RWY 5 (CAT II & III)

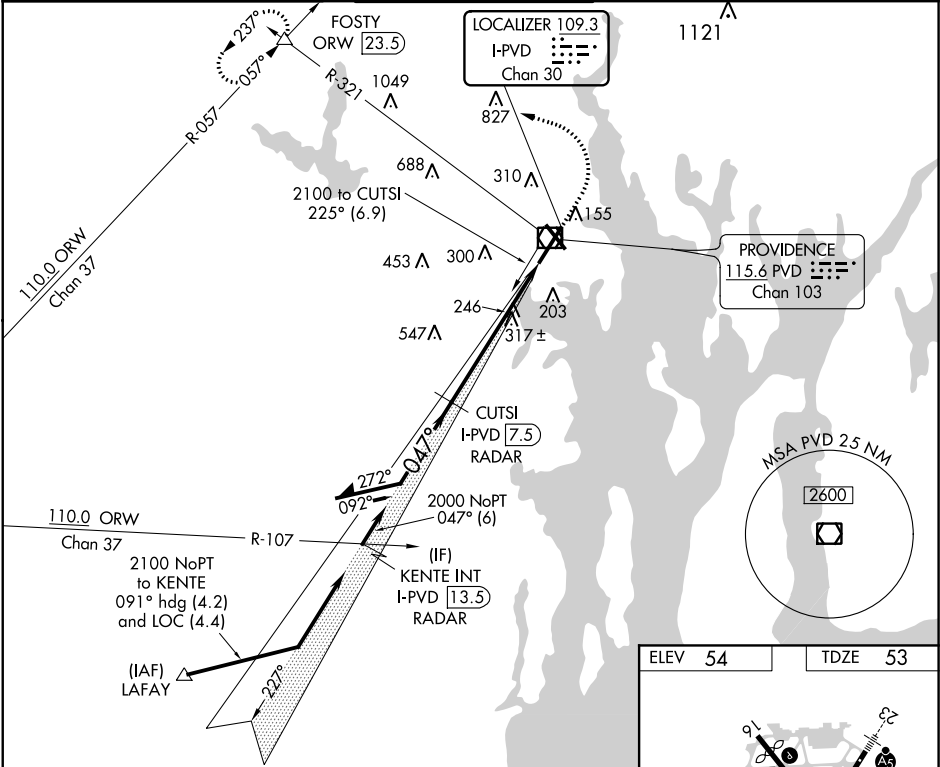
THEODORE FRANCIS GREEN STATE (PVD)

Procedure NA when control tower closed.

ALSIF-2

MISSED APPROACH: Climb to 800 then climbing left turn to 2500 on heading 270° and PVD VOR/DME R-321 to FOSTY INT/ORW 23.5 DME and hold.

D-ATIS	PROVIDENCE APP CON ★	PROVIDENCE TOWER ★	GND CON	CLNC DEL
<b>124.2</b>	<b>123.675 244.875</b>	<b>120.7 (CTAF) 0 257.8</b>	<b>121.9 348.6</b>	<b>126.65 348.6</b>



Remain within 10 NM

CUTSI I-PVD 7.5 RADAR

800

2500

PVD R-321

FOSTY

2100

227°

047°

2000

GS 3.00°

TCH 53

6 NM

1008'

CATEGORY	A	B	C	D
S-ILS 5	CAT II	RA 106/12	100 DA 153	
S-ILS 5		CAT IIIa	RVR 700	
S-ILS 5		CAT IIIb	RVR 600	
S-ILS 5		CAT IIIc	NA	

CATEGORY II & III ILS - SPECIAL AIRCREW & AIRCRAFT CERTIFICATION REQUIRED

ELEV 54

TDZE 53

The inset chart shows the runway layout with Runway 5 (047°) and Runway 16 (227°). It includes the localizer alignment for Runway 5 and the runway width of 8700 x 150 feet. The tower is located at 134 feet elevation.

REIL Rwy 5  
TDZ/CL Rwy 5 0  
REIL Rwy 16 and 23 0  
HIRL Rwy 5-23 and 16-34 0