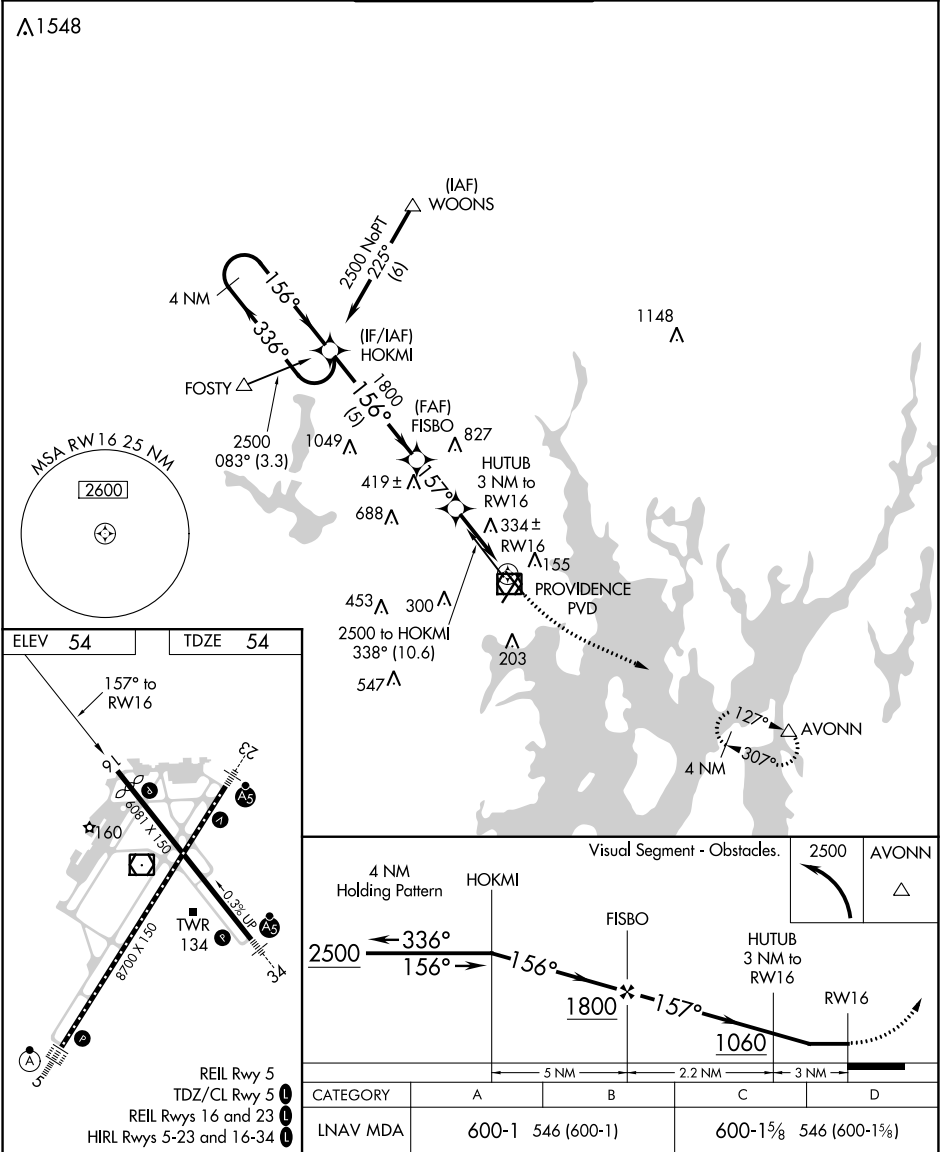


APP CRS	Rwy Idg	5516
157°	TDZE	54
	Apt Elev	54

RNAV (GPS) RWY 16

THEODORE FRANCIS GREEN STATE (PVD)

RNP APCH.		MISSED APPROACH: Climbing left turn to 2500 direct AVONN WP and hold.		
▼ ▲ Rwy 16 helicopter visibility reduction below ¾ SM NA.				
D-ATIS	PROVIDENCE APP CON ★	PROVIDENCE TOWER ★	GND CON	CLNC DEL
124.2	123.675 244.875	120.7 (CTAF) 257.8	121.9 348.6	126.65 348.6



NE-1, 03 DEC 2020 to 31 DEC 2020

NE-1, 03 DEC 2020 to 31 DEC 2020