

WAAS  
CH **93705**  
**W16A**

APP CRS  
**160°**

Rwy Idg **7100**  
TDZE **18**  
Apt Elev **18**

**RNAV (GPS) RWY 16**

QUONSET STATE (OQU)

▼

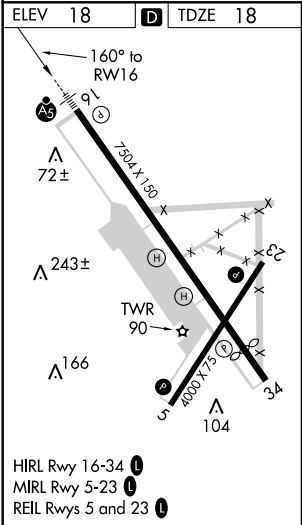
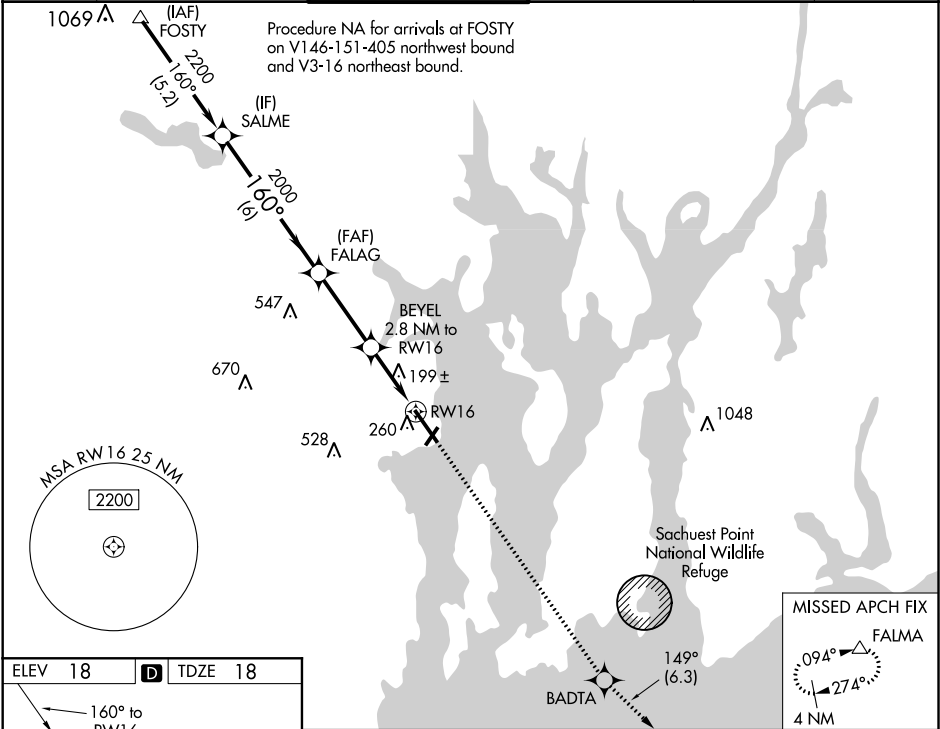
▲

For uncompensated Baro-VNAV systems, LNAV/VNAV NA below -15°C (5°F) or above 54°C (130°F). Circling Rwy 5 NA at night. DME/DME RNP-0.3 NA.

MALSR

MISSED APPROACH: Climb to 3000 direct BADTA and on track 149° to FALMA and hold.

ATIS ★ <b>118.6</b>	PROVIDENCE APP CON ★ <b>123.675 244.875</b>	QUONSET TOWER ★ <b>126.35 (CTAF) 0 252.9</b>	GND CON <b>134.5 226.675</b>	CLNC DEL <b>134.5</b>	UNICOM <b>122.95</b>
------------------------	--	---	---------------------------------	--------------------------	-------------------------



VGSI and RNAV glidepath not coincident (VGSI Angle 3.00/TCH 58).				
GP 3.00° TCH 50				
6 NM 3.3 NM 1.6 NM 1.2 NM				
CATEGORY	A	B	C	D
LPV DA	218-1/2 200 (200-1/2)			
LNAV/VNAV DA	442-3/4 424 (500-3/4)			
LNAV MDA	460-1/2 442 (500-1/2)			
<b>C</b> CIRCLING	620-1 602 (700-1)		620-13/4 602 (700-13/4)	880-23/4 862 (900-23/4)