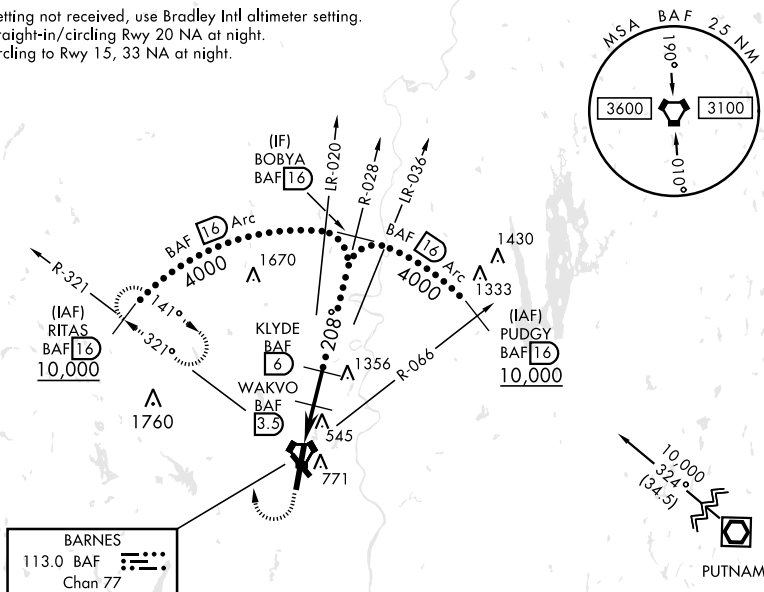


## HI-TACAN RWY 20

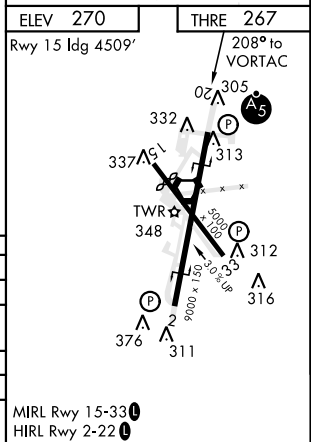
VORTAC BAF <b>113.0</b> Chan <b>77</b>	APCH CRS <b>208°</b>	Rwy Idg THRE <b>267</b> Arpt Elev <b>270</b>	JAL-446 [USAF]	WESTFIELD-BARNES REGIONAL (KBAF)
<b>V</b> *When ALS inop, increase CAT CDE vis to 1½ miles. **When ALS inop, increase CAT CDE vis to 1% miles.		MALSR <b>A5</b>	MISSED APPROACH: Climb to 1300, then climbing right turn to 4000 via hdg 010° and BAF VORTAC R-321 to RITAS and hold.	
ATIS <b>127.1 263.15</b>	BRADLEY APP CON <b>125.35 281.5</b>	WESTFIELD TOWER ★ <b>118.9 (CTAF) 251.1</b>	GND CON <b>121.7 289.4</b>	

When Icl altimeter setting not received, use Bradley Intl altimeter setting.  
When VGSI inop, straight-in/circling Rwy 20 NA at night.  
When VGSI inop, circling to Rwy 15, 33 NA at night.



## EMERG SAFE ALT 100 NM 7000

1300	4000	RITAS R-321 16	VGSI and descent angles not coincident.	BOBYA R-028 16
↑	hdg 010°			
CATEGORY	C	D	E	
S-20*	800/55	533 (600-1¼)		
CIRCLING	1160-2¾ 890 (900-2¾)	1160-3 890 (900-3)	1640-3 1370 (1400-3)	
BRADLEY INTL ALTIMETER				
S-20**	840-1¾	573 (600-1¾)		
CIRCLING	1200-2¾ 930 (1000-2¾)	1200-3 930 (1000-3)	1680-3 1410 (1500-3)	



## HI-TACAN RWY 20