

LOC I-GWJ <u>109.9</u>	APCH CRS 048°	Rwy Idg 10,396 TDZE 238 Arpt Elev 241
----------------------------------	-------------------------	--

AL-447 [USAF]

WESTOVER ARB METROPOLITAN (KCEF)

▼ * When ALS inop, increase RVR to 40, vis to $\frac{3}{4}$ mile.
**** When ALS inop, increase CAT AB RVR to 55, vis to 1 mile; CAT CDE vis to $1\frac{1}{2}$ miles.**
***** Circling not authorized from Rwy 23 clockwise to Rwy 33.**

ALSF-1

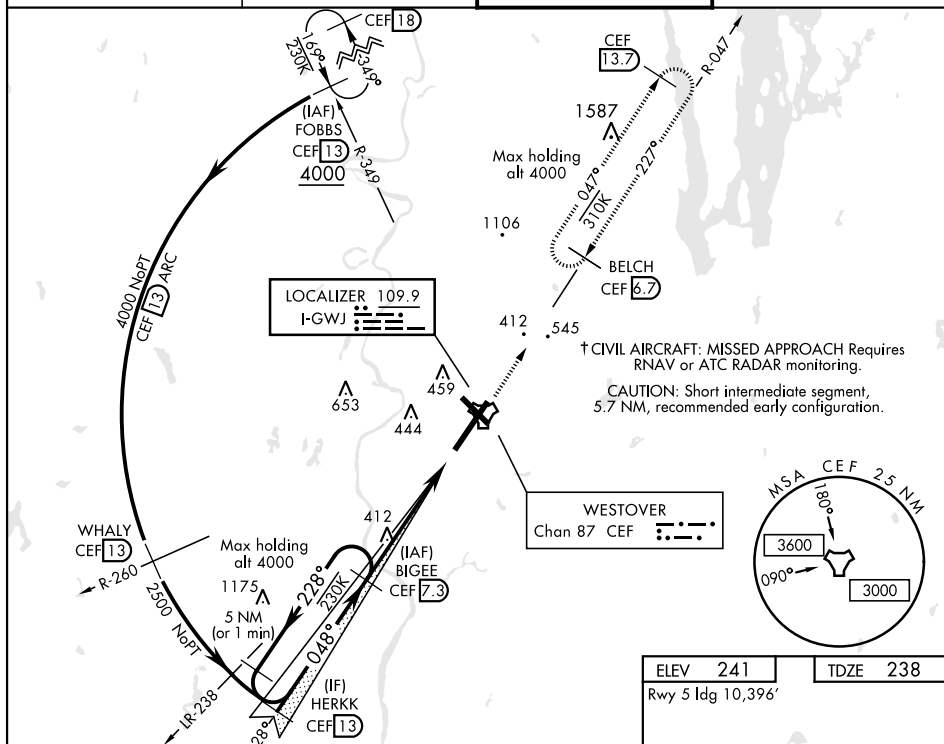
† MISSED APPROACH: Climb to 2700 on hdg 048° to intcp CEF TACAN R-047 direct BELCH and hold, continue climb-in-hold to 2700.

ATIS ★
127.525

BRADLEY APP CON
125.35 281.5

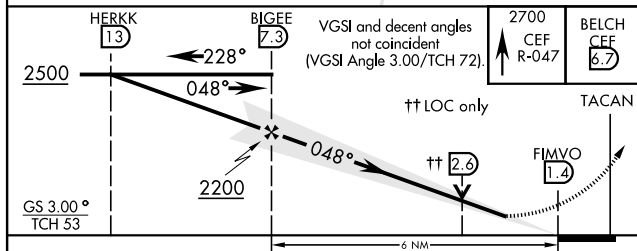
WESTOVER TOWER ★
134.85 (CTAF) 348.75

GND CON
118.35 275.8



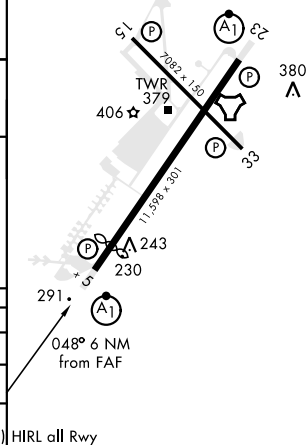
DME REQUIRED

EMERG SAFE ALT 100 NM 6400



CATEGORY	A	B	C	D	E
S-ILS 5 *	488/24		250	(300-½)	
S-LOC 5 **	720/24	482 (500-½)	720/50		482 (500-1)
CIRCLING ***	800-1	559 (600-1)	840-1½ 599 (600-1½)	980-2¼ 739 (800-2¼)	1000-2¾ 759 (800-2¾)

ELEV 241	TDZE 238
Rwy 5 ldg 10,396'	



SPRINGFIELD/CHICOPEE, MASSACHUSETTS

42° 11' N 072° 32' W

WESTOVER ARB METROPOLITAN (KCEF)

Amdt 3 02JAN20

ILS or LOC RWY 5

NE-1, 03 DEC 2020 to 31 DEC 2020