

RNAV (GPS) RWY 23

| | | |
|----------|-----------|--------|
| APCH CRS | Rwy Idg | 11,598 |
| 228° | TDZE | 241 |
| | Arpt Elev | 241 |

AL-447 (USAF)

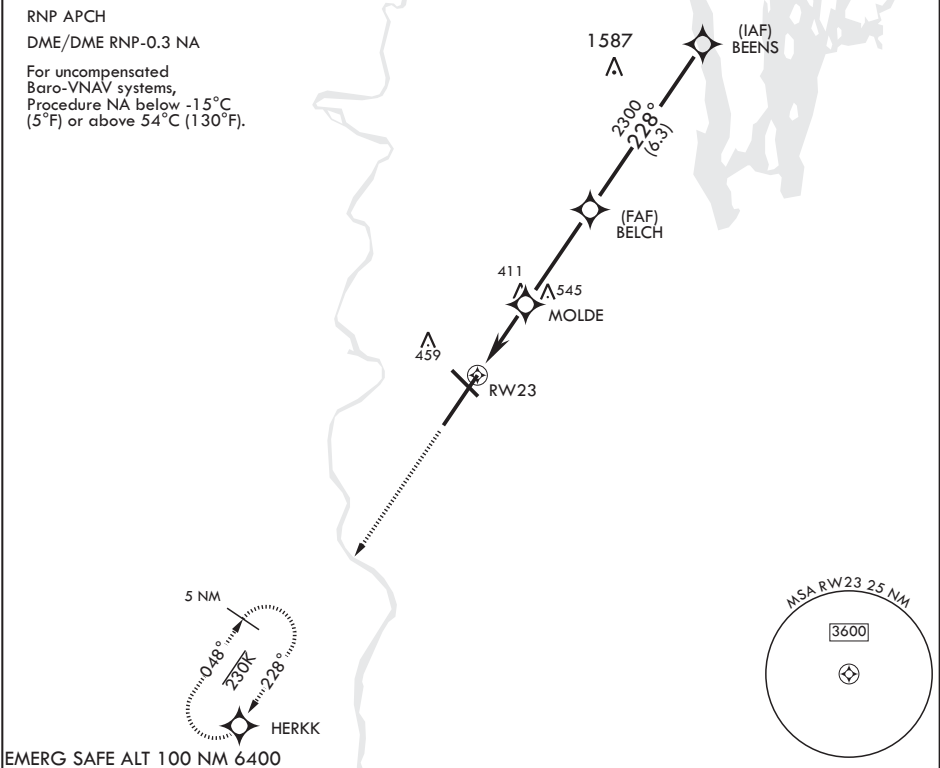
WESTOVER ARB METROPOLITAN (KCEF)

⚠ * When ALS inop, increase vis to 1 1/2 miles.
** When ALS inop, increase CAT AB RVR to 55, vis to 1 mile; CAT CDE vis to 1 3/4 miles.
*** Circling not authorized from Rwy 23 clockwise to Rwy 33.

ALSF-1

MISSED APPROACH: Climb to 3000 direct HERKK and hold.

| | | | |
|------------------|---|--------------------------------|-------------------------|
| ATIS★ 127.525 | BRADLEY APP CON/DEP CON 125.35 281.5 | TOWER★ 134.85 (CTAF) 348.75 | GND CON 118.35 275.8 |
|------------------|---|--------------------------------|-------------------------|



EMERG SAFE ALT 100 NM 6400

3000

HERKK

VGSI and RNAV glidepath not coincident (VGSI angle 3.00/TCH 64)

BEENS

ELEV 241

TDZE 241

Rwy 5 Idg 10,396'

| CATEGORY | A | B | C | D | E |
|---------------|----------------------|---|---------------------------|---------------------------|----------------------------|
| LNAV/VNAV DA* | 776/55 | | 535 | (600-1) | |
| LNAV MDA** | 840/24 599 (600-1/2) | | 840-1 1/4 599 (600-1 1/4) | (600-1 1/4) | |
| CIRCLING*** | 840-1 599 (600-1) | | 840-1 3/4 599 (600-1 3/4) | 980-2 1/4 739 (800-2 1/4) | 1000-2 3/4 759 (800-2 3/4) |

391

400 TWR

7082 x 130

11,598 x 301

228° to RWY 23

33

5

HIRL all Rwys

RNAV (GPS) RWY 23

NE-1, 03 DEC 2020 to 31 DEC 2020

NE-1, 03 DEC 2020 to 31 DEC 2020