

RNAV (GPS) RWY 5

APCH CRS	Rwy Idg	10,396
048°	TDZE	238
	Arpt Elev	241

AL-447 (USAF)

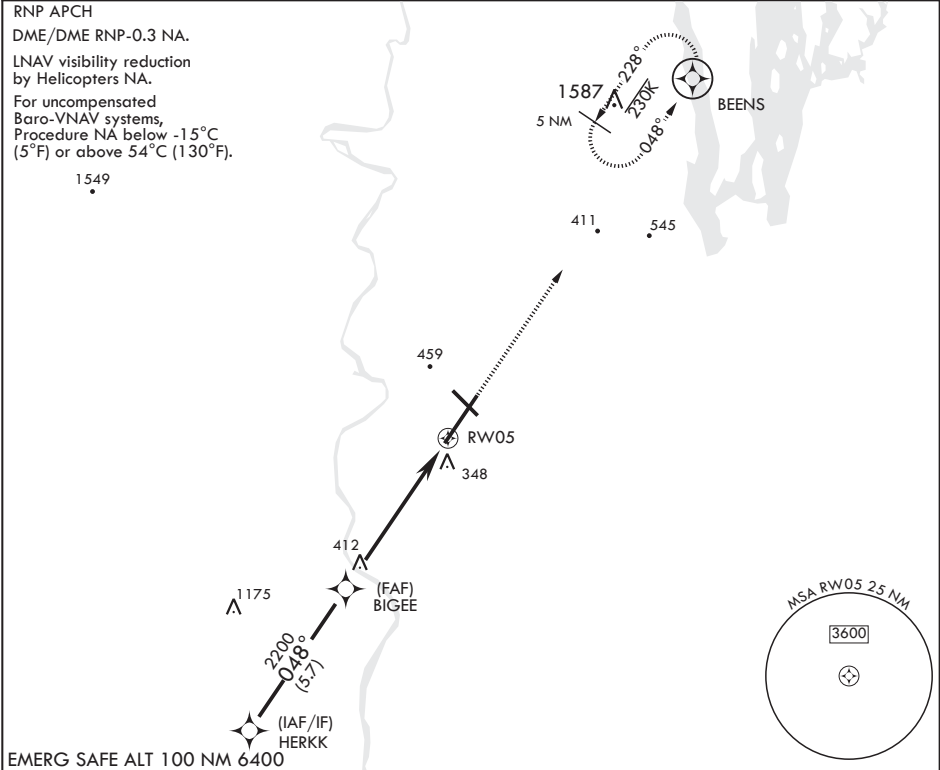
WESTOVER ARB METROPOLITAN (KCEF)

**⚠** \* When ALS inop increase vis to 1 3/8 miles.  
\*\* When ALS inop increase CAT AB RVR to 55, vis to 1 mile, CAT CDE vis to 1 3/8 miles.  
\*\*\* Circling not authorized all CAT acft from Rwy 23 clockwise to Rwy 33.

ALSF-1

MISSED APPROACH: Climb to 2700 direct BEENS and hold.

ATIS★ 127.525	BRADLEY APP CON/DEP CON 125.35 281.5	TOWER★ 134.85 (CTAF) 348.75	GND CON 118.35 275.8
------------------	---	--------------------------------	-------------------------



HERKK

2500

0.48°

BIGEE

2200

GP 3.00°  
TCH 53

6 NM

RWY 05

2700

BEENS

ELEV 241

TDZE 238

Rwy 5 Idg 10,396'

VGSI and RNAV glidepath not coincident (VGSI Angle 3.00/TCH 72 ft)

† LNAV only

† 1.2 NM to RWY 05

391

BCN 406

TWR 379

11,598 x 30'

0.48° to RWY 05

HIRL all Rws

CATEGORY	A	B	C	D	E
LNAV/VNAV DA*	686/45		448	(500-7/8)	
LNAV MDA**	700/24 462 (500-1/2)		700/50	462	(500-1)
<b>C</b> CIRCLING***	800-1 559 (600-1)		840-1 1/2 599 (600-1 1/2)	980-2 1/4 739 (800-2 1/4)	1260-3 1019 (1100-3)

RNAV (GPS) RWY 5