

APP CRS	Rwy Idg	9509
058°	TDZE	173
	Apt Elev	173

RNAV (RNP) Z RWY 6

BRADLEY INTL (BDL)

▼

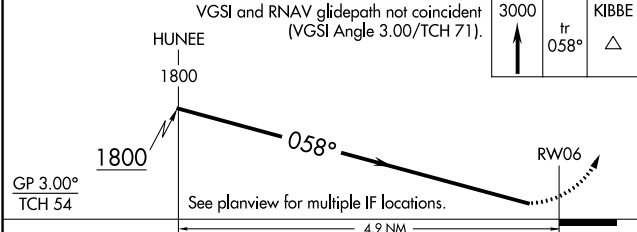
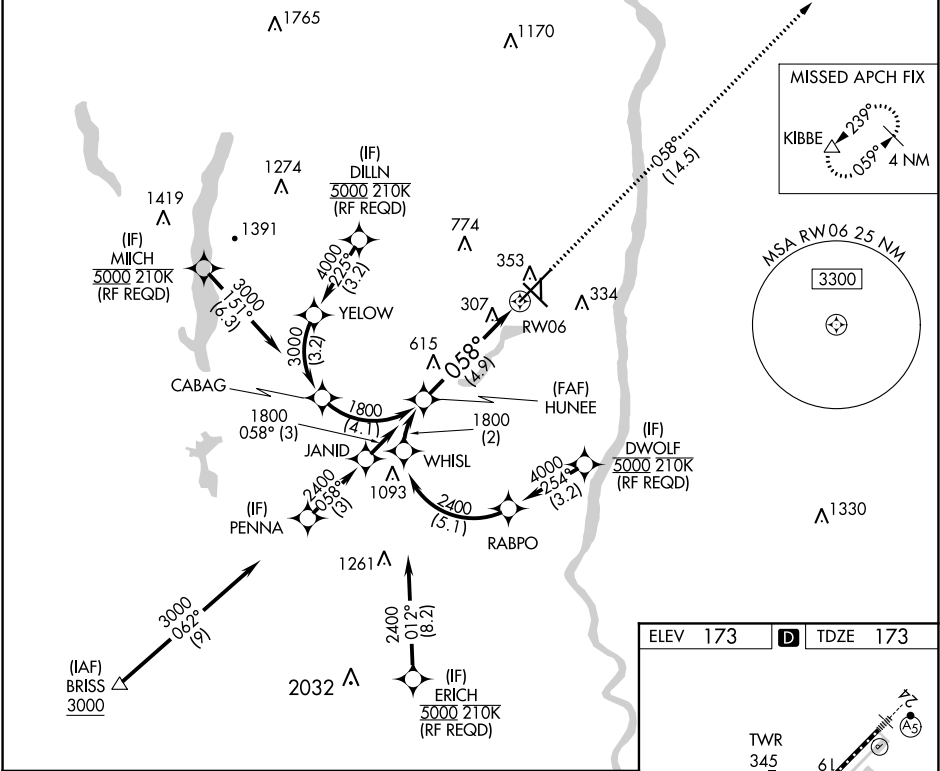
For uncompensated Baro-VNAV systems, procedure NA below -18°C (0°F) or above 54°C (130°F). GPS required. For inop ALS, increase RNP 0.11 all Cats visibility to RVR 5500 and RNP 0.30 all Cats visibility to 1 3⁄8 SM.

ALSF-2

MISSED APPROACH:

Climb to 3000 on track 058° to KIBBE and hold.

D-ATIS	YANKEE APP CON	BRADLEY TOWER	GND CON	CLNC DEL	CPDLC
118.15	123.95 290.55 (061°-240°) 125.35 281.5 (241°-060°)	120.3 351.8	121.9 348.6	121.75 322.3	



CATEGORY	A	B	C	D
RNP 0.11 DA		545/40	372 (400-3⁄4)	
RNP 0.30 DA		672-50	499 (500-1)	

ELEV 173

D

TDZE 173

The inset map shows the location of RWY 6 and surrounding infrastructure. It includes the tower (TWR 345), the runway (RWY 06), and the missed approach fix (KIBBE). The map also shows the 058° track to RWY 06 and the 058° to RWY 06. The map is labeled with various distances and angles, such as 9510 x 200, 4269 x 100, and 5847 x 150.