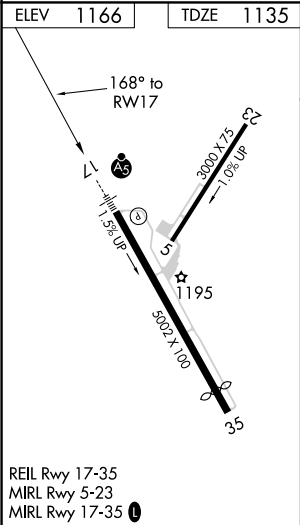
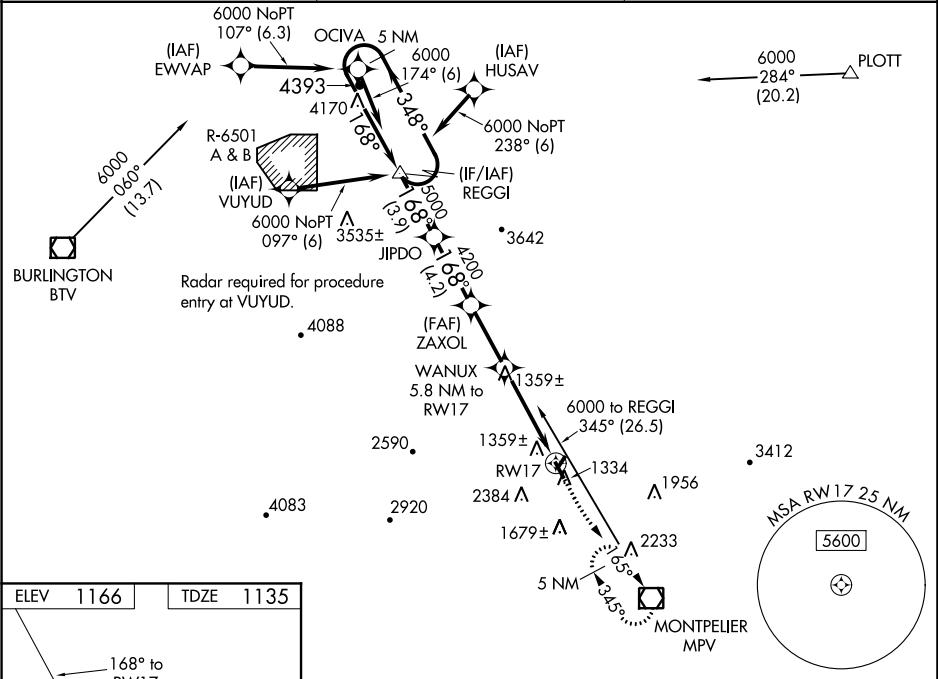


WAAS CH 69611 W17A	APP CRS 168°	Rwy ldg TDZE Apt Elev	5002 1135 1166
--	------------------------	-----------------------------	---

RNAV (GPS) RWY 17

EDWARD F KNAPP STATE (MPV)

RNP APCH. <div><div>For uncompensated Baro-VNAV systems, LNAV/VNAV NA below -21°C or above 54°C. Rwy 17 helicopter visibility reduction below ¾ SM NA. When local altimeter setting not received, procedure NA. Circling Rwy 5, 35, NA at night. For inoperative MALSR, increase LNAV/VNAV all Cats visibility to 1½ miles.</div><div><div>MALSR</div><div><div></div></div></div></div>		MISSED APPROACH: Climb to 1700 then climb to 5200 direct MPV VOR/DME and hold, continue climb-in-hold to 5200.
ASOS 132.675	BOSTON CENTER 135.7 282.2	UNICOM 122.8 (CTAF) 0



5 NM Holding Pattern		REGGI	JIPDO	ZAXOL	WANUX 5.8 NM to RW17	1700	5200	MPV
6000		348°	168°	168°	5000	4200	*2980	*LNNAV only.
GP 3.00°		TCH 50	3.9 NM	4.2 NM	3.8 NM	4.1	1.7	
CATEGORY	A	B	C	D				
LPV DA	1509-¾		374 (400-¾)					
LNAV/VNAV DA	1624-1¼		489 (500-1¼)					
LNAV MDA	1680-¾	545 (600-¾)	1680-1¼	545 (600-1¼)				
CIRCLING	1980-1¼ 814 (900-1¼)	1980-1½ 814 (900-1½)	2700-3 1534 (1600-3)	2920-3 1754 (1800-3)				