

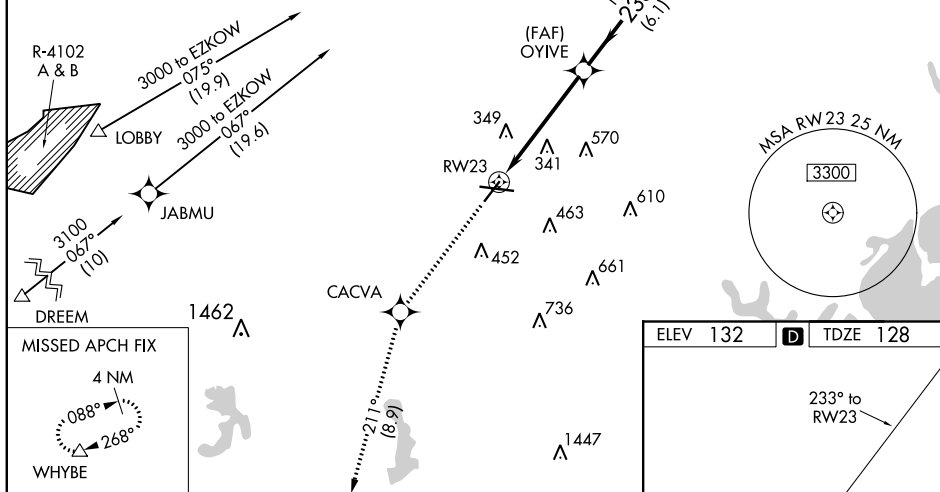
APP CRS 233°	Rwy Idg TDZE Apt Elev	5107 128 132
------------------------	-----------------------------	---


RNAV (GPS) RWY 23
LAURENCE G HANSCOM FIELD (BED)

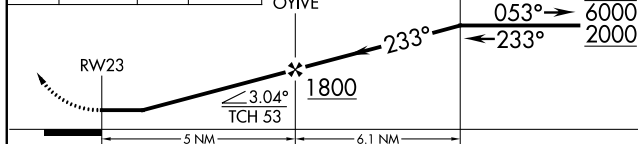
RNP APCH.			<p>MISSED APPROACH: Climb to 3000 direct CACVA and on track 211° to WHYBE and hold.</p>		
<p>▼ ▲</p>	<p>Rwy 23 helicopter visibility reduction below $\frac{3}{4}$ SM NA. When local altimeter setting not received, use Boston altimeter setting and increase all MDAs 60 feet and UNAV Cats C and D $\frac{1}{8}$ SM and Circling Cat D visibility $\frac{1}{4}$ SM.</p>				
<p>ATIS 124.6</p>	<p>BOSTON APP CON 124.4 279.6</p>	<p>HANSCOM TOWER ★ 118.5 (CTAF) 0 257.2</p>	<p>GND CON 121.7</p>	<p>CLNC DEL 121.85</p>	<p>UNICOM 122.95</p>

Procedure NA for arrivals at LOBBY
on V431 westbound.

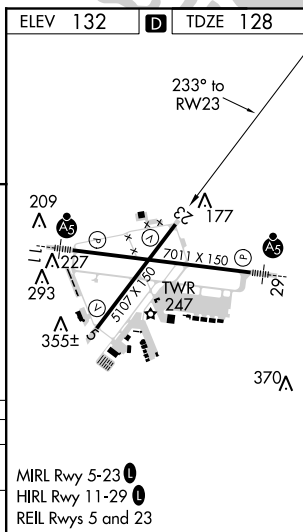
Procedure NA for arrivals at WITCH on V3 southbound



3000 ↑	CACVA 	fr 211°	WHYBE △	VGSI and descent angles not coincident (VGSI Angle 3.50/TCH 56). JENDI 5 NM Holding Pattern
-----------	--	------------	------------	---



CATEGORY	A	B	C	D
LNAV MDA	640-1	512 (600-1)	640-1½	512 (600-1½)
CIRCLING	720-1	588 (600-1)	880-2¼ 748 (800-2¼)	920-2½ 788 (800-2½)



RNAV (GPS) RWY 23