


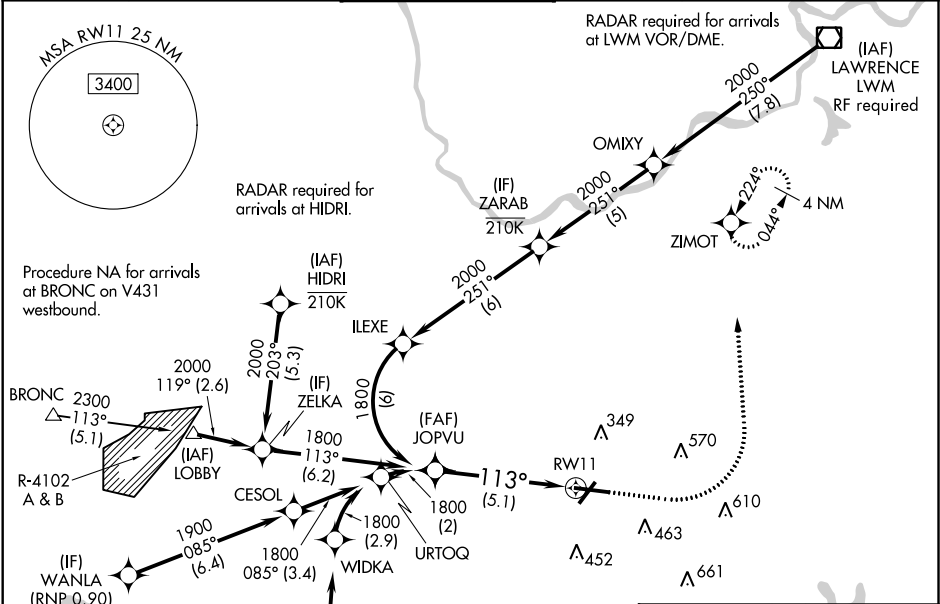
APP CRS	Rwy Idg	7011
113°	TDZE	132
	Apt Elev	132

RNAV (RNP) Y RWY 11

LAURENCE G HANSCOM FIELD (BED)

<p>T</p> <p>For uncompensated Baro-VNAV systems, procedure NA below -16°C (4°F) or above 54°C (130°F). GPS required. For inop MALSR, increase RNP 0.30 all Cats visibility to 1 ½ .</p>	<p>MALSR</p> 	<p>MISSED APPROACH: Climb to 1000 then climbing left turn to 2000 direct ZIMOT and hold.</p>
--	--	--

ATIS 124.6	BOSTON APP CON 124.4 279.6	HANSCOM TOWER ★ 118.5 (CTAF) 0 257.2	GND CON 121.7	CLNC DEL 121.85	UNICOM 122.95
----------------------	--------------------------------------	--	-------------------------	---------------------------	-------------------------



RF required 210K		2000 020° (5.2)		1462 (IF) FOVEG (RNP 0.90) RF required 210K		736 ELEV 132		D		TDZE 132	
2048 A		VGSi and RNAV glidepath not coincident (VGSi Angle 3.00/TCH 67).		RADAR required for arrivals at FOVEG.		1000		2000		ZIMOT	
JOPVU 1800		1800		113°		RW11		113° to RW11		209 A	
GP 3.00° TCH 50		See Planview for multiple IF locations.		5.1 NM		RW11		209 A		A5	
CATEGORY		A		B		C		D		A5	
RNP 0.30 DA		534/45		402 (500-7%)						A5	
AUTHORIZATION REQUIRED											
MIRL Rwy 5-23 0 HIRL Rwy 11-29 0 REIL Rws 5 and 23											

NE-1, 03 DEC 2020 to 31 DEC 2020

NE-1, 03 DEC 2020 to 31 DEC 2020