
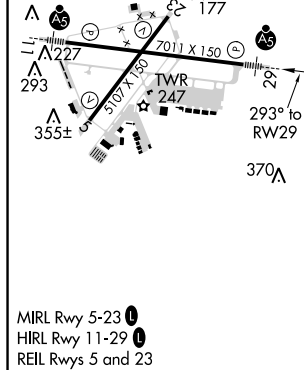
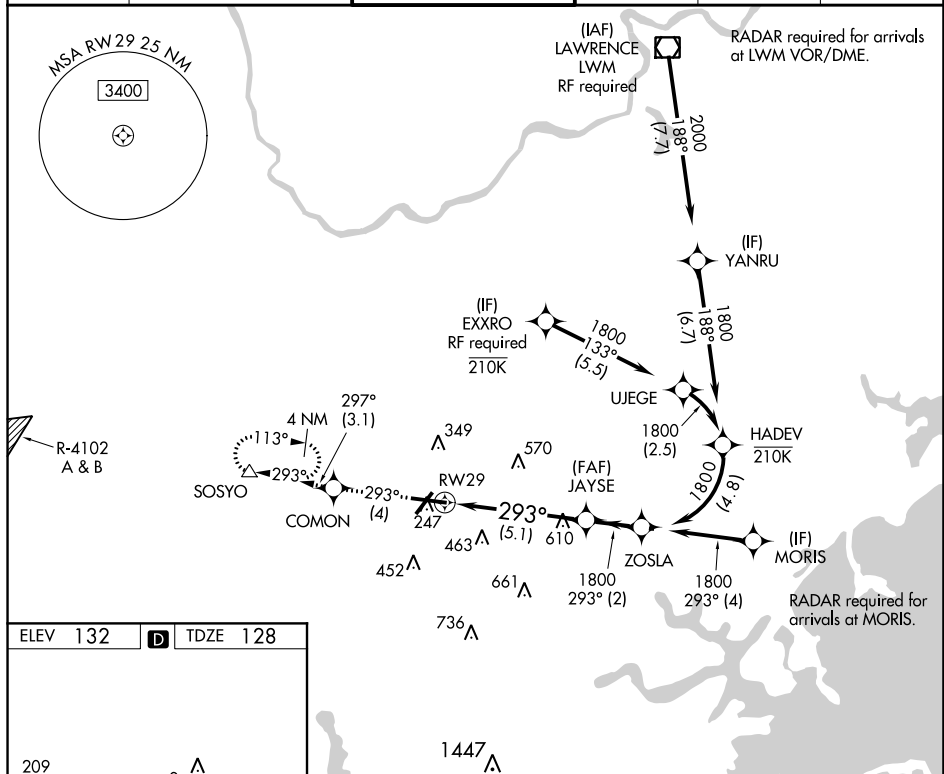


RNAV (RNP) Y RWY 29
LAURENCE G HANSCOM FIELD (BED)

T	<p>For uncompensated Baro-VNAV systems, procedure NA below -16°C (4°F) or above 54°C (130°F). GPS required.</p> <p>For inop MALSR, increase RNP 0.30 all Cats visibility to 1¾.</p>	<p>MALSR</p> 	<p>MISSED APPROACH: Climb to 2000 on track 293° to COMON and on track 297° to SOSYO and hold.</p>
----------	---	--	---

ATIS 124.6	BOSTON APP CON 124.4 279.6	HANSCOM TOWER* 118.5 (CTAF) 0 257.2	GND CON 121.7	CLNC DEL 121.85	UNICOM 122.95
---------------	-------------------------------	--	------------------	--------------------	------------------



2000 ↑	tr 293°	COMON ✦	tr 297°	SOSYO △	See planview for multiple IF locations.	
				JAYSE 1800	ZOSLA 1800	
		RW29		293° 1800		GP 3.00° TCH 55
		5.1 NM		2 NM		
CATEGORY	A		B	C	D	
RNP 0.30 DA	651-1¼ 523 (600-1¼)					
AUTHORIZATION REQUIRED						

NE-1, 03 DEC 2020 to 31 DEC 2020