

WAAS CH 86612 W29A	APP CRS 293°	Rwy Idg 7011 TDZE 128 Apt Elev 132
--	------------------------	---

RNAV (GPS) Z RWY 29

LAURENCE G HANSCOM FIELD (BED)

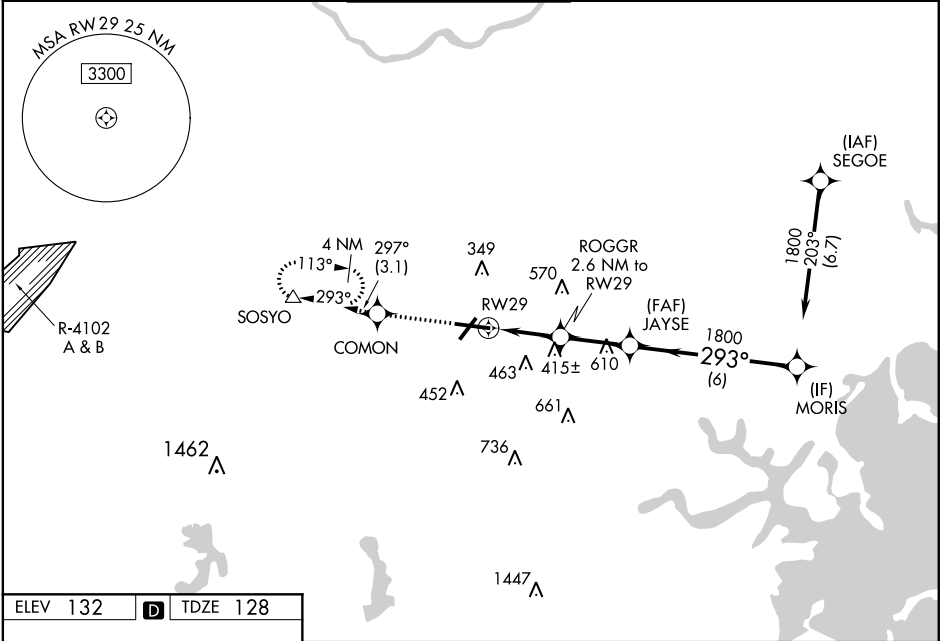
RNP APCH

For uncompensated Baro-VNAV systems, LNAV/VNAV NA below -16°C (4°F) or above 54°C (130°F). Baro-VNAV and VDP NA with Boston altimeter setting. When local altimeter setting not received, use Boston altimeter setting: increase LPV DA to 377 feet, LNAV/VNAV DA to 663 feet; increase all MDAs 60 feet and LNAV Cats C and D, and Circling Cat D visibility ¼ SM. For inop ALS, increase LNAV/VNAV all Cats visibility and LNAV Cat C/D to 1 ½ SM. For inop ALS when using Boston altimeter setting, increase LNAV/VNAV all Cats visibility to 1 ½ SM and LNAV Cat C/D to 1 ½ SM.

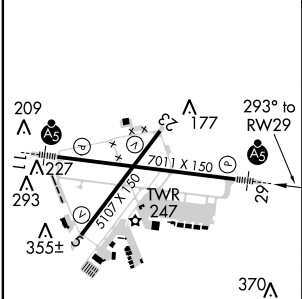
MALSRL

MISSED APPROACH:
Climb to 2000 direct
COMON and on
track 297° to SOSYO
and hold.

ATIS 124.6	BOSTON APP CON 124.4 279.6	HANSCOM TOWER ★ 118.5 (CTAF) 0 257.2	GND CON 121.7	CLNC DEL 121.85	UNICOM 122.95
----------------------	--------------------------------------	--	-------------------------	---------------------------	-------------------------



ELEV 132	D	TDZE 128
----------	----------	----------



MIRL Rwy 5-23
HIRL Rwy 11-29
REIL Rwy 5 and 23

	2000	COMON	tr 297°	SOSYO	
	↑	✧		△	
	*LNAV only.				
	RWY 29 1.5 NM 1.1 NM 2.5 NM 6 NM				
	JAYSE 1800 MORIS 1800				
	*1000				
	GP 3.00° TCH 55				
CATEGORY	A	B	C	D	
LPV DA	328-½ 200 (200-½)				
LNAV/VNAV DA	614-1⅛ 486 (500-1⅛)				
LNAV MDA	640-½	512 (600-½)	640-1	512 (600-1)	
CIRCLING	720-1	588 (600-1)	880-2¼ 748 (800-2¼)	920-2½ 788 (800-2½)	