

| | | | |
|----------------|-------------|----------|-----------|
| LOC/DME I-EWB | APP CRS | Rwy Idg | 5000 |
| 109.7 | 234° | TDZE | 78 |
| Chan 34 | | Apt Elev | 79 |

LOC BC RWY 23
NEW BEDFORD RGNL (EWB)

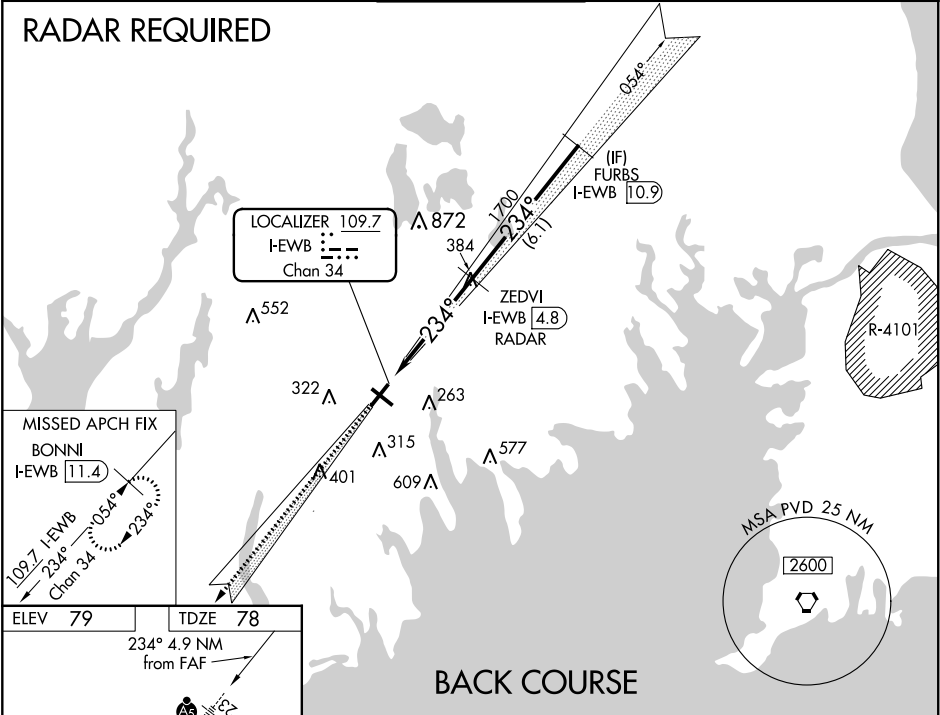
▼ When local altimeter setting not received, use Taunton altimeter setting and increase all MDA 40 feet and increase S-23 Cat C/D visibility 1/8 mile and Circling Cat D visibility 1/4 mile. VDP NA with Taunton altimeter setting. Helicopter visibility reduction below 3/4 SM NA. For inop MALSRL increase S-23 Cat A/B visibility 1/4 mile and Cat C/D visibility 3/8 mile. For inop MALSRL, when using Taunton altimeter setting, increase S-23 Cat A/B visibility 1/4 mile.

MALSRL

MISSED APPROACH:
Climb to 2100 on
I-EWB SW course
to BONNI/I-EWB
11.4 DME and hold.

| | | | | |
|-----------------------|---|---|-------------------------|-------------------------|
| ATIS 126.85 | PROVIDENCE APP CON* 128.7 269.525 | NEW BEDFORD TOWER* 118.1 (CTAF) 0 239.0 | GND CON 121.9 | UNICOM 122.95 |
|-----------------------|---|---|-------------------------|-------------------------|

RADAR REQUIRED



ELEV 79 TDZE 78

234° 4.9 NM from FAF

MIRL Rwy 14-32
HIRL Rwy 5-23
REIL Rwy 32

FAF to MAP 4.3 NM

| | | | | | |
|---------|------|------|------|------|------|
| Knots | 60 | 90 | 120 | 150 | 180 |
| Min:Sec | 4:18 | 2:52 | 2:09 | 1:43 | 1:26 |

| | | | | |
|---|--|------------------------|---|---|
| 2100 ↑ | I-EWB SW crs | BONNI I-EWB 11.4 | ZEDVI I-EWB 4.8 RADAR | FURBS I-EWB 10.9 |
| Disregard GS indications. | | | | |
| <p>The diagram shows a flight path starting from the left, indicated by a dashed arrow. It proceeds horizontally for 0.6 NM, then turns right by 3.00° for 0.8 NM. A vertical dashed line marks the end of this segment, with a label '1.3 NM to RW23'. The path then continues at an angle of 23.4° for 6.1 NM, ending at a point labeled '2000'. A vertical dashed line is also shown at the 6.1 NM mark. A 'TCH 46' (Touchdown Height) is indicated with a 3.00° angle. A 'ZEDVI RADAR' station is located at a distance of 4.8 NM from the start of the 23.4° segment. An 'I-EWB 0.5' marker is located at the end of the 0.8 NM segment.</p> | | | | |
| CATEGORY | A | B | C | D |
| S-23 | 580- $\frac{3}{4}$ 502 (600- $\frac{3}{4}$) | | 580-1 502 (600-1) | |
| CIRCLING | 600-1 521 (600-1) | 640-1 561 (600-1) | 720- $1\frac{1}{4}$ 641 (700- $1\frac{1}{4}$) | 940- $2\frac{3}{4}$ 861 (900- $2\frac{3}{4}$) |

NE-1, 03 DEC 2020 to 31 DEC 2020

NE-1, 03 DEC 2020 to 31 DEC 2020