

WAAS CH 77999 W11A	APP CRS 109°	Rwy Idg TDZE Apt Elev	7001 980 1009
--	------------------------	-----------------------------	--

RNAV (GPS) RWY 11

WORCESTER RGNL (ORH)

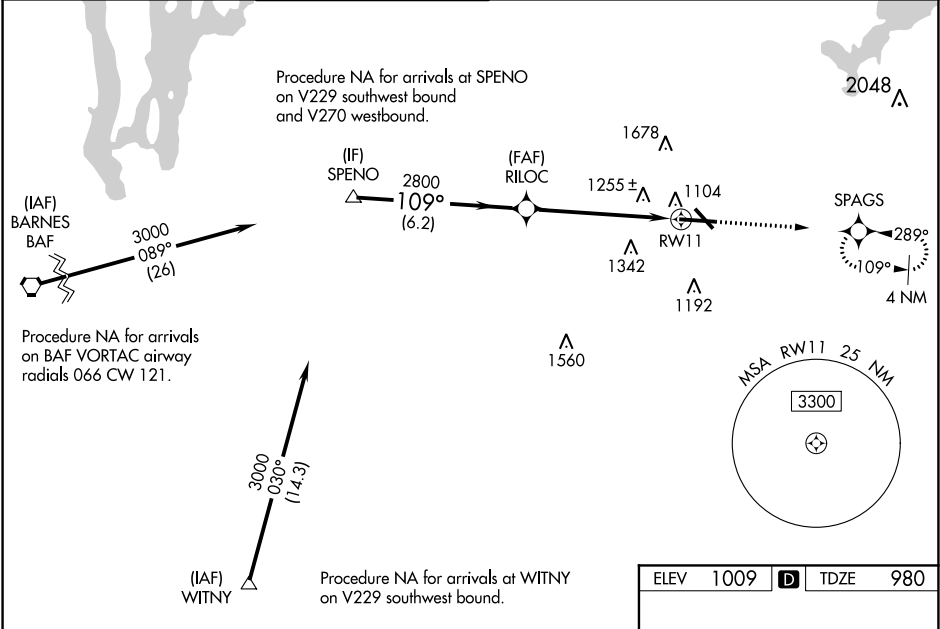
⚠

For uncompensated Baro-VNAV systems, LNAV/VNAV NA below -20°C (-4°F) or above 54°C (130°F).
DME/DME RNP-0.3 NA.
Inop table does not apply to LPV all Cats.
Inop table does not apply to LNAV Cats A/B.

ALSF-2

MISSED APPROACH: Climb to 2700 direct SPAGS and hold, continue climb-in-hold to 3000.

ATIS 126.55	YANKEE APP CON 119.0 327.1	WORCESTER TOWER ★ 120.5 (CTAF) 263.0	GND CON 123.85	CLNC DEL 128.65	CLNC DEL 119.0 (When twr closed)	UNICOM 122.95
-----------------------	--------------------------------------	--	--------------------------	---------------------------	---	-------------------------



SPENO

3000

109°

GP 3.00° TCH 55

6.2 NM

2800

4 NM

1.5 NM

RW11

2700

SPAGS

* LNAV only

CATEGORY	A	B	C	D
LPV DA	1180/40 200 (200-¾)			
LNAV/VNAV DA	1565-1½ 585 (600-1½)			
LNAV MDA	1520/40	540 (600-¾)	1520/55	540 (600-1)
CIRCLING	1560-1 551 (600-1)	1720-1 711 (800-1)	2000-3	991 (1000-3)

TDZ/CL Rwy 11

REIL Rwy 15, 29, and 33

HIRL Rwy 11-29

MIRL Rwy 15-33