

APP CRS
333°

Rwy Idg
TDZE
Apt Elev

5000
999
1009

RNAV (GPS) RWY 33

WORCESTER RGNL (ORH)

RNP APCH.

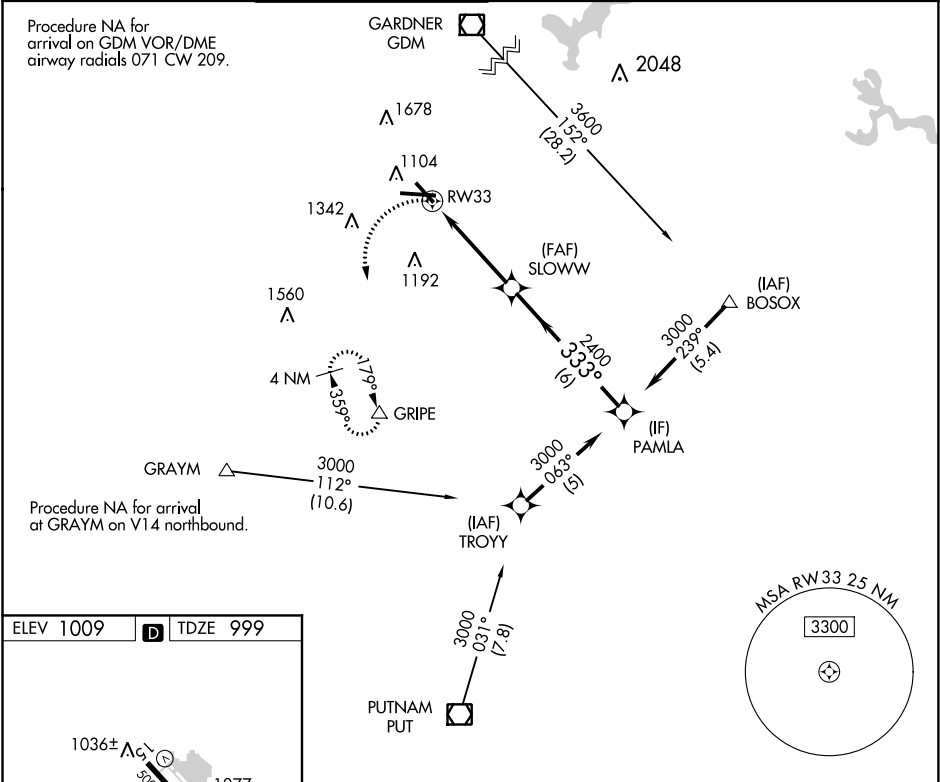
▼

⚠

When local altimeter setting not received, use Bedford altimeter setting and increase all MDAs 200 feet and visibility LNAV Cat C/D ½ SM and visibility Circling Cat B ¼ SM. VDP NA with Bedford altimeter setting.

MISSED APPROACH:
Climbing left turn to 3000
direct GRIPE and hold.

ATIS	YANKEE APP CON	WORCESTER TOWER★	GND CON	CLNC DEL	CLNC DEL	UNICOM
126.55	119.0 327.1	120.5 (CTAF) 0 263.0	123.85	128.65	119.0 (When twr closed)	122.95



ELEV 1009

D

TDZE 999

1036±

1077

1080

TWR 1100

333° to RW33

1036±

1077

1080

TWR 1100

333° to RW33

TDZ/CL Rwy 11

REIL Rwy 15, 29 and 33

HIRL Rwy 11-29

MIRL Rwy 15-33

3000

GRIPE

△

SLOWWW

PAMLA

3000

Procedure Turn NA

1.1 NM to RW33

3.03° TCH 40

6 NM

CATEGORY	A	B	C	D
LNAV MDA	1480-1	482 (500-1)	1480 -1⅓	482 (500-1⅓)
CIRCLING	1560-1 551 (600-1)	1720-1 711 (800-1)	2000-3	991 (1000-3)