

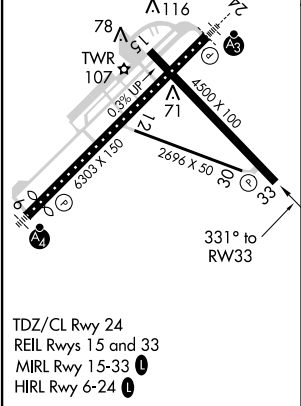
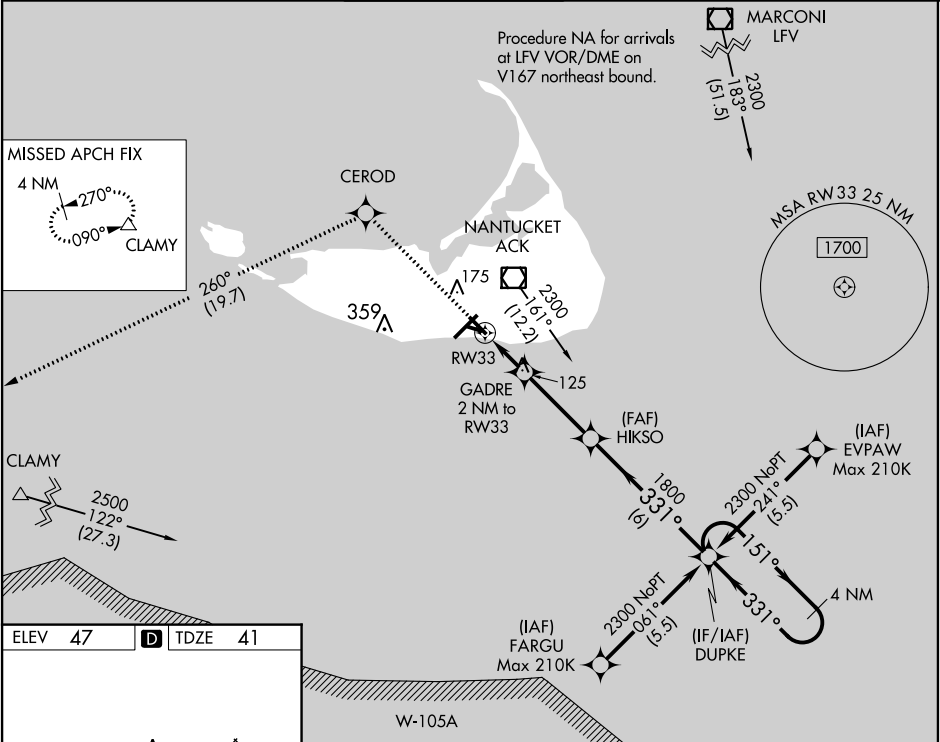
WAAS CH 77835 W33A	APP CRS 331°	Rwy Idg TDZE Apt Elev	4500 41 47
--	------------------------	-----------------------------	---------------------------------------

RNAV (GPS) RWY 33
NANTUCKET MEMORIAL (ACK)

Baro-VNAV NA when using Hyannis altimeter setting. For uncompensated Baro-VNAV systems, LNAV/VNAV NA below -11°C (13°F) or above 54°C (130°F). When local altimeter setting not received, use Hyannis altimeter setting: increase all DA 63 feet and all MDA 80 feet; increase LNAV Cats C and D visibility 1/8 mile and Circling Cat C visibility 1/4 mile. DME/DME RNP-0.3 NA.

MISSED APPROACH: Climb to 2500 direct CEROD and on track 260° to CLAMY and hold.

ATIS 127.5	BOSTON APP CON* 126.1 318.1	NANTUCKET TOWER * 118.3 (CTAF) 0	GND CON 132.5	CLNC DEL 119.375	UNICOM 122.95
----------------------	---------------------------------------	--	-------------------------	----------------------------	-------------------------



2500 CEROD		CLAMY	VGSi and RNAV glidepath not coincident (VGSi Angle 3.00°/TCH 45°).	
* LNAV only.		tr 260°	4 NM Holding Pattern	
GADRE 2 NM to RW33		HIKSO 1800	DUPKE 2300	
RW33		*720	GP 3.00° TCH 56	
2 NM		3.4 NM	6 NM	
CATEGORY	A	B	C	D
LPV DA		291-1	250 (300-1)	
LNAV/VNAV DA		301-1	260 (300-1)	
LNAV MDA		380-1	339 (400-1)	
CIRCLING	480-1	500-1	720-2	1000-3
	433 (500-1)	453 (500-1)	673 (700-2)	953 (1000-3)

NE-1, 03 DEC 2020 to 31 DEC 2020

NE-1, 03 DEC 2020 to 31 DEC 2020