

WAAS CH <b>77812</b> <b>W24A</b>	APP CRS <b>246°</b>	Rwy Idg <b>5425</b> TDZE <b>43</b> Apt Elev <b>54</b>
--	------------------------	---

RNAV (GPS) RWY 24

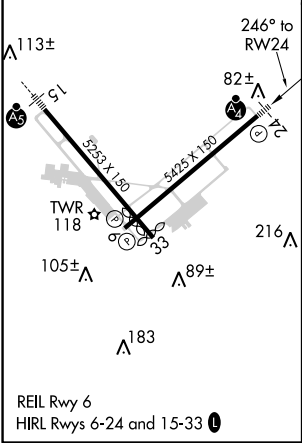
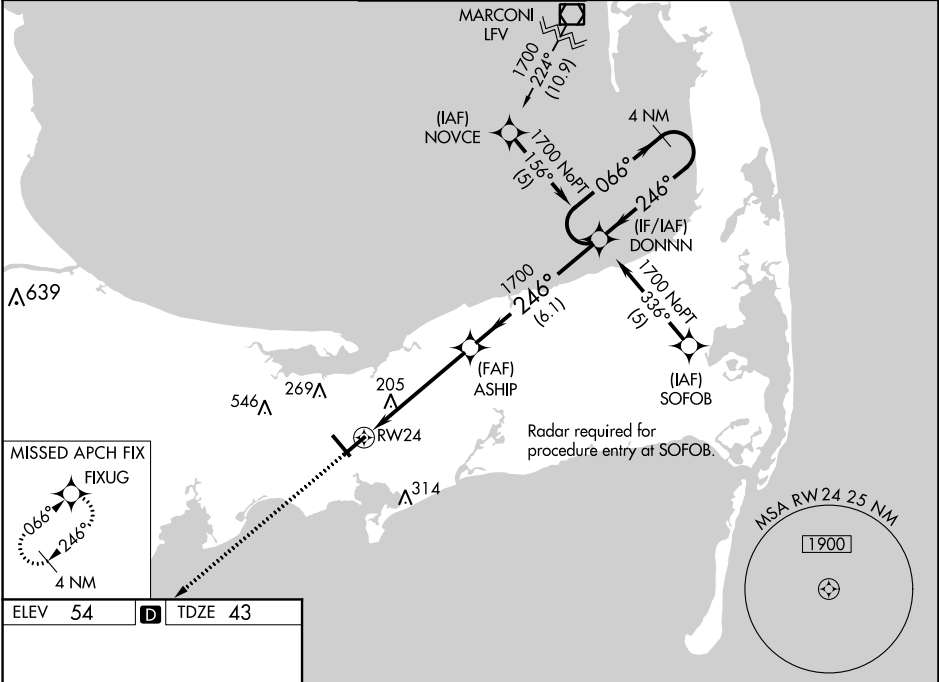
BARNSTABLE MUNI-BOARDMAN/POLANDO FIELD (HYA)

**⚠** For uncompensated Baro-VNAV systems, LNAV/VNAV NA below -15°C (5°F) or above 48°C (118°F). DME/DME RNP -0.3 NA. Visibility reduction by helicopters NA. When local altimeter setting not received, use Chatham altimeter setting; increase LPV DA to 350 feet; increase LNAV/VNAV DA to 473 feet; increase all MDAs 40 feet and visibility Cats C and D ¼ SM. Baro-VNAV NA when using Chatham Muni altimeter setting. For inoperative MALSR, increase LNAV Cat C visibility to RVR 6000. Inoperative table does not apply to LPV all Cats, and LNAV Cats A and B.

**MALSF**

**MISSED APPROACH:**  
Climb to 2000 direct  
FIXUG and hold.

ATIS <b>123.8</b>	BOSTON APP CON ★ <b>118.2 284.6</b>	HYANNIS TOWER ★ <b>119.5 (CTAF) 0 257.8</b>	GND CON <b>118.45</b>	CLNC DEL <b>125.15</b>	UNICOM <b>122.95</b>
----------------------	--	--	--------------------------	---------------------------	-------------------------



2000

↑

FIXUG

✳

ASHIP

DONNN

4 NM

Holding Pattern

066° →

← 246°

1700

GP 3.00°

TCH 50

246°

1700

RW24

5 NM

6.1 NM

CATEGORY	A	B	C	D
LPV DA		318/50	275 (300-1)	
LNAV/VNAV DA		441/50	398 (400-1)	
LNAV MDA		500/50	457 (500-1)	
CIRCLING	560-1 506 (600-1)	580-1 526 (600-1)	860-2 ¼ 806 (900-2 ¼)	860-2 ½ 806 (900-2 ½)