

WAAS CH 99423 W33A	APP CRS 336°	Rwy Idg 5103 TDZE 50 Apt Elev 54
--	------------------------	---

RNAV (GPS) RWY 33

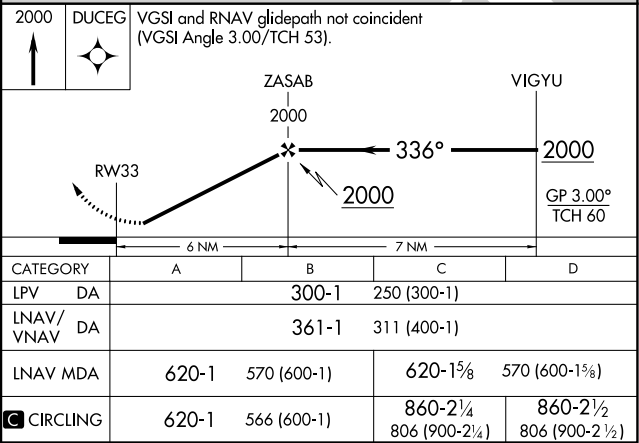
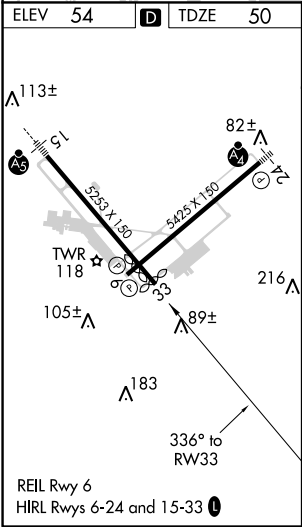
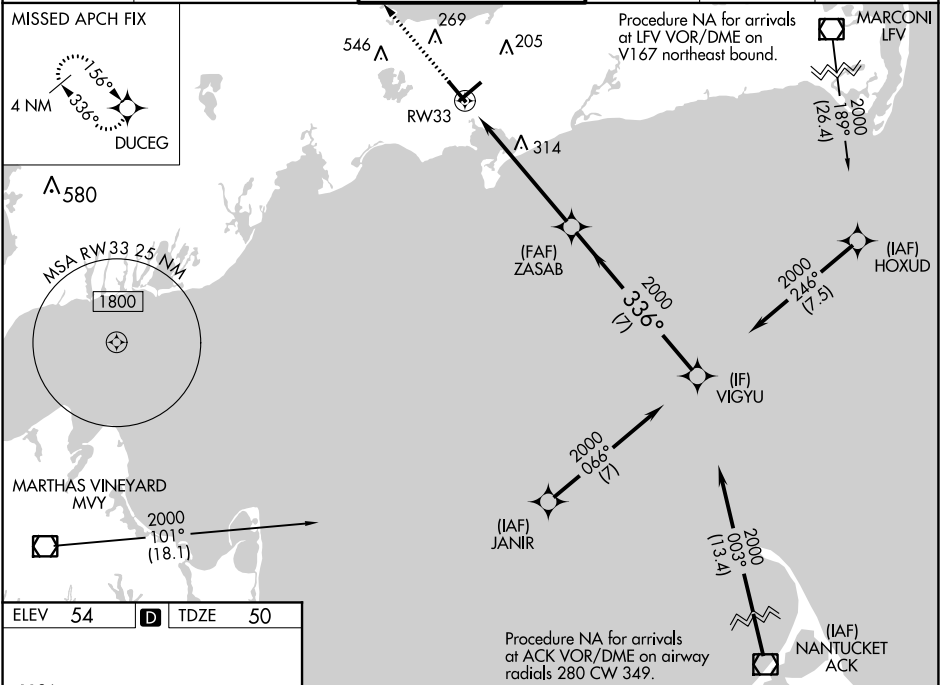
BARNSTABLE MUNI-BOARDMAN/POLANDO FIELD (HYA)

⚠

Baro-VNAV NA when using Chatham altimeter setting. For uncompensated Baro-VNAV systems, LNAV/VNAV NA below -15°C (5°F) or above 43°C (109°F). DME/DME RNP-0.3 NA. When local altimeter setting not received, use Chatham altimeter setting: increase LPV DA to 332 feet; increase LNAV/VNAV DA to 393 feet; increase all MDAs 40 feet and visibility Cats C and D ¼ SM. Helicopter visibility reduction below ¾ SM NA.

MISSED APPROACH:
Climb to 2000 direct DUCEG and hold.

ATIS 123.8	BOSTON APP CON★ 118.2 284.6	HYANNIS TOWER★ 119.5 (CTAF) 0 257.8	GND CON 118.45	CLNC DEL 125.15	UNICOM 122.95
----------------------	---------------------------------------	---	--------------------------	---------------------------	-------------------------



NE-1, 03 DEC 2020 to 31 DEC 2020

NE-1, 03 DEC 2020 to 31 DEC 2020