

WAAS CH 45799 W06A	APP CRS 066°	Rwy Idg 5019 TDZE 45 Apt Elev 54
--	------------------------	---

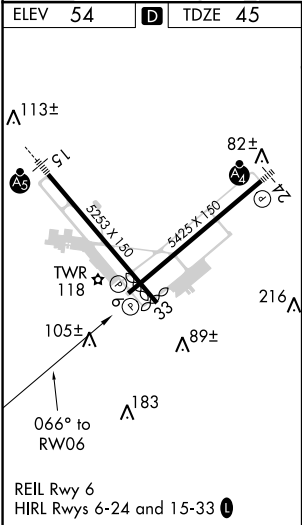
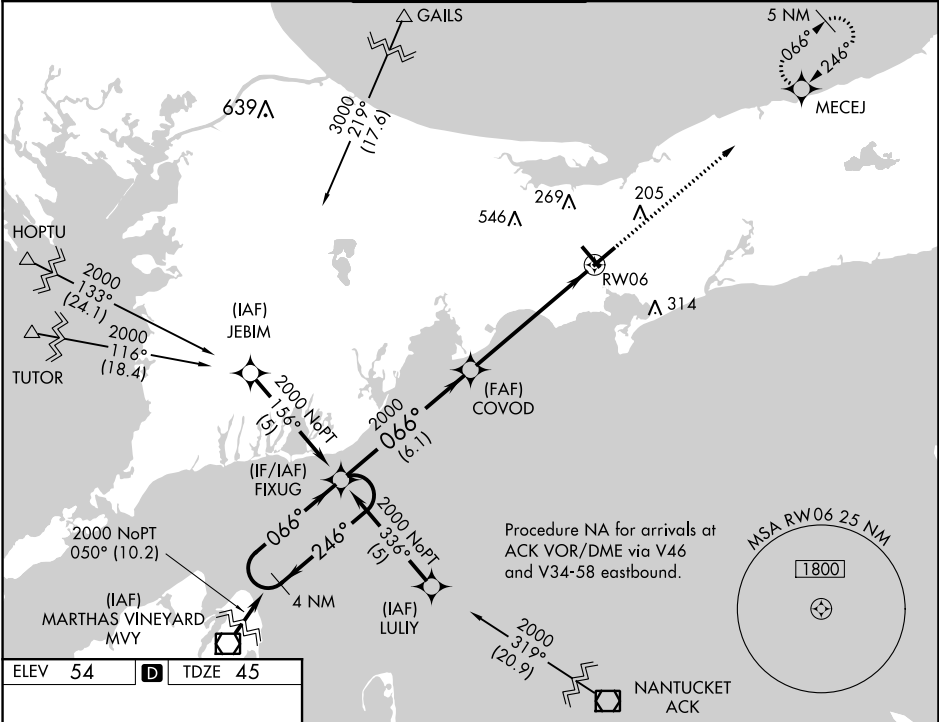
RNAV (GPS) RWY 6

BARNSTABLE MUNI-BOARDMAN/POLANDO FIELD (HY A)

DME/DME RNP-0.3 NA. Baro-VNAV NA below -15°C (5°F). Baro-VNAV NA when using Chatham altimeter setting. When local altimeter setting not received, use Chatham altimeter setting; increase LPV DA to 348 feet; increase LNAV/VNAV DA to 475 feet; increase all MDAs 40 feet and visibility Cats C and D ¼ SM.

MISSED APPROACH: Climb to 1700 direct MECEJ and hold.

ATIS 123.8	BOSTON APP CON★ 118.2 284.6	HYANNIS TOWER★ 119.5 (CTAF) 0 257.8	GND CON 118.45	CLNC DEL 125.15	UNICOM 122.95
----------------------	---------------------------------------	---	--------------------------	---------------------------	-------------------------



4 NM Holding Pattern				1700	MECEJ
CATEGORY	A	B	C	D	
LPV DA	316-1		271 (300-1)		
LNAV/VNAV DA	443-1½		398 (400-1½)		
LNAV MDA	480-1	435 (500-1)	480-1¼ 435 (500-1¼)	480-1½ 435 (500-1½)	
CIRCLING	560-1 506 (600-1)	580-1 526 (600-1)	860-2¼ 806 (900-2¼)	860-2½ 806 (900-2½)	

NE-1, 03 DEC 2020 to 31 DEC 2020

NE-1, 03 DEC 2020 to 31 DEC 2020