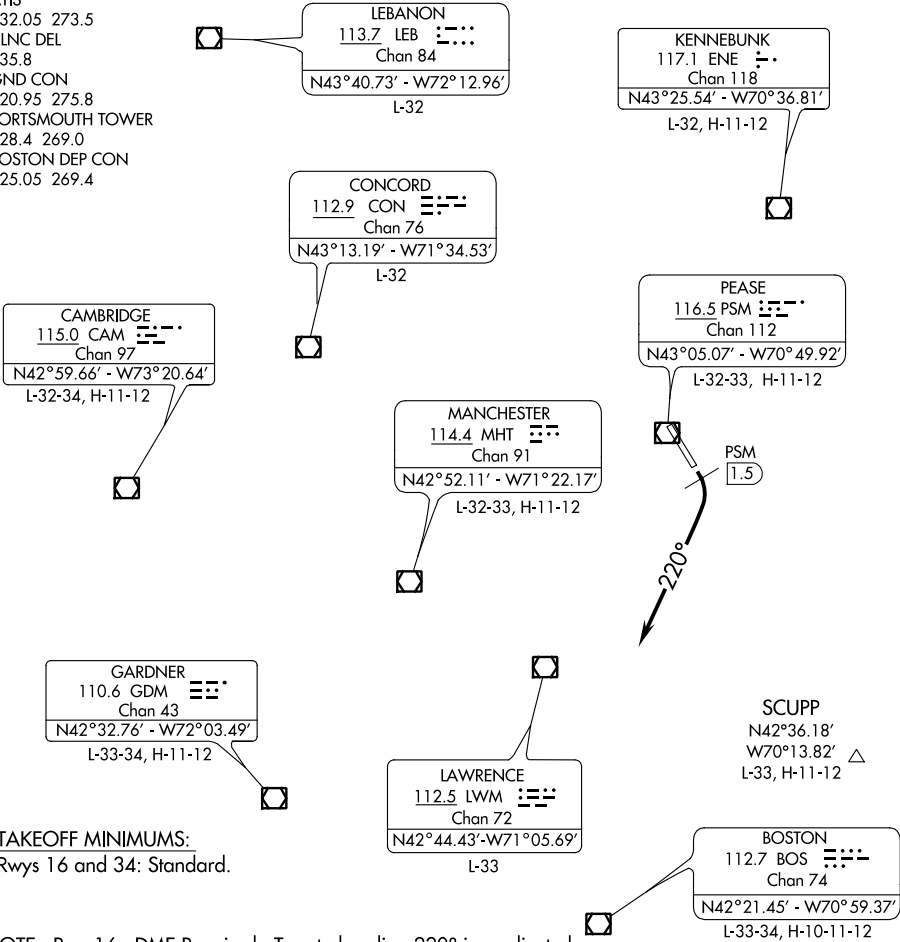


ATIS
132.05 273.5
CLNC DEL
335.8
GND CON
120.95 275.8
PORTSMOUTH TOWER
128.4 269.0
BOSTON DEP CON
125.05 269.4



TAKEOFF MINIMUMS:
Rwys 16 and 34: Standard.

NOTE: Rwy 16: DME Required. Turn to heading 220° is predicated on avoiding noise sensitive areas. Initiate turns as soon as practicable upon reaching 500' MSL, but no earlier than PSM 1.5 DME. PSM 1.5 DME intersects runway centerline 190' from departure end.

NOTE: Rwy 34: Cross DER at or above 10' AGL/105' MSL.

Note: Chart not to scale.

DEPARTURE ROUTE DESCRIPTION

TAKEOFF RUNWAY 16: Climb via 165° course, cross PSM 1.5 DME at or above 500', turn right heading 220° or as assigned by ATC for radar vectors to assigned route/navaid/fix, if unable to reach 500' or above by PSM 1.5 DME continue on 165° course, Thence . . .

TAKEOFF RUNWAY 34: Climb runway heading or as assigned by ATC for radar vectors to assigned route/navaid/fix, Thence . . .

. . . . Maintain 3000' or as assigned by ATC. Expect clearance to filed altitude/flight level 5 minutes after departure.