

WAAS CH 93829 W15A	APP CRS 146°	Rwy Idg TDZE Apt Elev 3327 67 67
--	------------------------	--

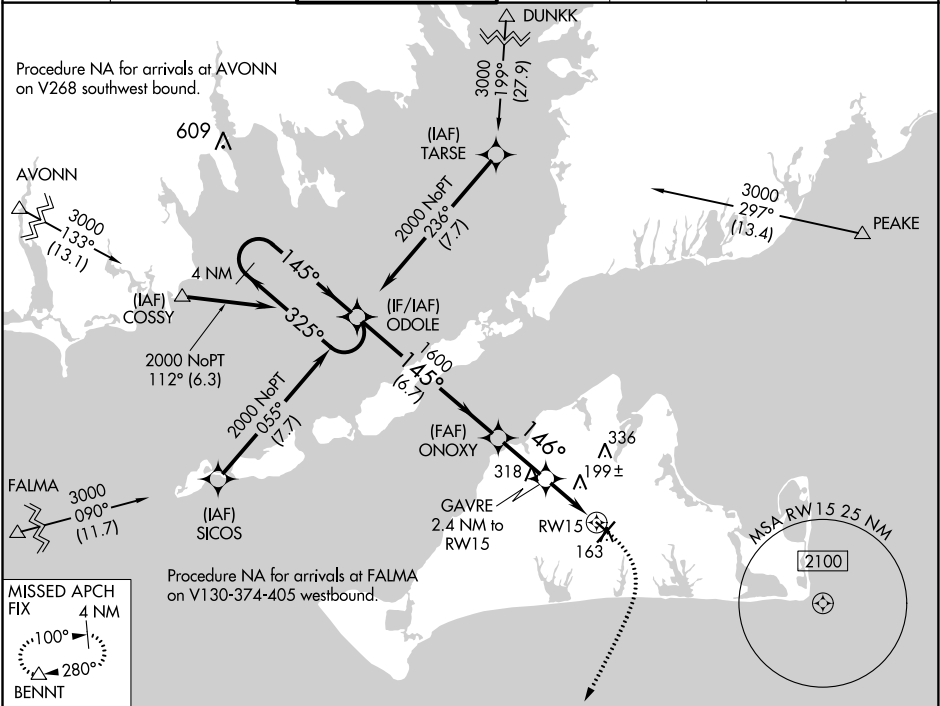
RNAV (GPS) RWY 15

MARTHA'S VINEYARD (MVY)

⚠ Baro-VNAV NA when using Hyannis altimeter setting. For uncompensated Baro-VNAV systems, LNAV/VNAV NA below -15°C (5°F) or above 54°C (130°F). When local altimeter setting not received, use Hyannis altimeter setting and increase all DA 54 feet and all MDA 60 feet; increase LNAV Cat C and D visibility and Circling Cat C and D visibility ¼ mile. DME/DME RNP-0.3 NA. Helicopter visibility reduction below 1 SM NA. Night landing: Rwy 15 NA.

MISSED APPROACH:
Climb to 600 then climbing right turn to 2000 direct BENNT and hold.

ATIS 126.25	BOSTON APP CON ★ 119.7	VINEYARD TOWER ★ 121.4 (CTAF) 0	GND CON 124.35	CLNC DEL 124.35	CLNC DEL 119.7 (When twr closed)	UNICOM 122.95
-----------------------	----------------------------------	--	--------------------------	---------------------------	---	-------------------------



ELEV 67 **D** TDZE 67

146° to RW15
3327 X 75
-0.3% Up
5504 X 100
33
TWR 128
HIRL Rwy 6-24 **0**
MIRL Rwy 15-33 **0**
REIL Rwy 6
REIL Rwy 33 **0**

4 NM Holding Pattern

ODOLE

ONOX

GAVRE 2.4 NM to RW15

RW15

*LNAV only

GP 3.00°
TCH 53

6.7 NM 2.3 NM 2.4 NM

CATEGORY	A	B	C	D
LPV DA		317-1	250 (300-1)	
LNAV/ VNAV DA		317-1	250 (300-1)	
LNAV MDA	460-1	393 (400-1)	460-1½	393 (400-1½)
C CIRCLING	500-1 433 (500-1)	540-1 473 (500-1)	700-1¾ 633 (700-1¾)	780-2¼ 713 (800-2¼)

NE-1, 03 DEC 2020 to 31 DEC 2020

NE-1, 03 DEC 2020 to 31 DEC 2020