

WAAS CH <b>48804</b> <b>W24A</b>	APP CRS <b>236°</b>	Rwy Idg <b>5504</b> TDZE <b>63</b> Apt Elev <b>67</b>
--	------------------------	---

# RNAV (GPS) RWY 24

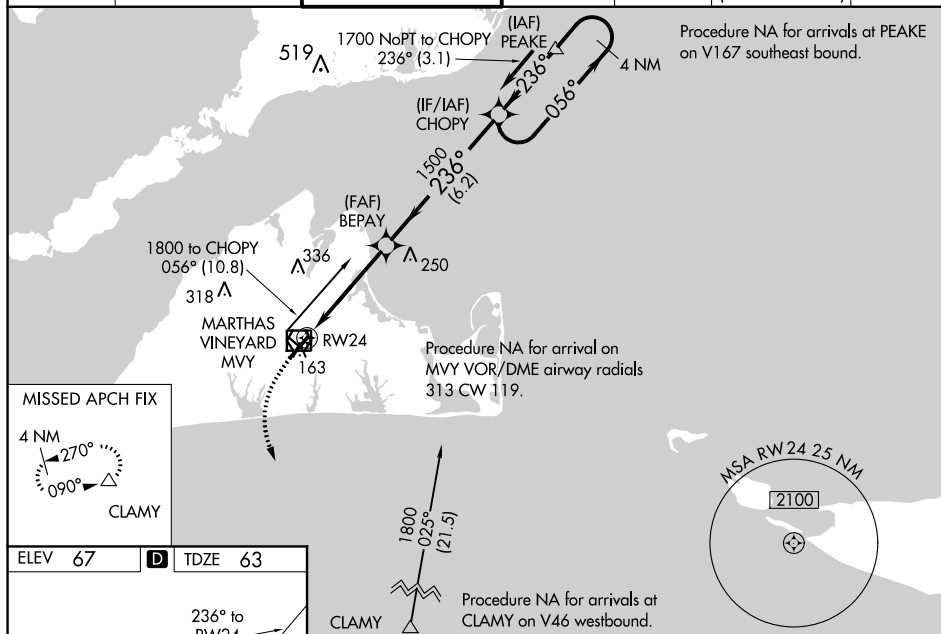
**T** For uncompensated Baro-VNAV systems, INAV/VNAV NA below -14°C (7°F) or above 54°C (130°F), DME/DME RNP-0.3 NA, when local altimeter setting not received, use Hyannis altimeter setting and increase all DA 54 feet and all MDA 60 feet; increase INAV/VNAV all Cats visibility to RVR 5200; increase INAV Cts C/D visibility to RVR 5000; increase Circling visibility Cts C to 2 miles and D to 2 1/2 mile. For inop MALSR, increase INAV/VNAV all Cts visibility to 1% mile. For inop MALSR using Hyannis altimeter setting, increase LPV all Cts visibility to RVR 4000, INAV/VNAV all Cts visibility to 1% mile and increase INAV Cts C/D visibility to 1% mile. VDP and Baro-VNAV NA when using Hyannis altimeter setting. Night landing: Rwy 15 NA. \*\* RVR 1800 authorized with use of FD or AP or HUD to DA, NA when using Hyannis altimeter setting.

MALSR



**MISSED APPROACH:**  
Climb to 500 then  
climbing left turn to  
2500 direct CLAMY  
and hold

ATIS <b>126.25</b>	BOSTON APP CON ★ <b>119.7</b>	VINEYARD TOWER ★ <b>121.4</b> (CTAF) <b>0</b>	GND CON <b>124.35</b>	CLNC DEL <b>124.35</b>	CLNC DEL <b>119.7</b> (When twr closed)	UNICOM <b>122.95</b>
-----------------------	----------------------------------	--	--------------------------	---------------------------	---	-------------------------



NE-1, 03 DEC 2020 to 31 DEC 2020

VINEYARD HAVEN, MASSACHUSETTS

Amdt 2E 07DEC17

41°24'N-70°37'W

MARTHA'S VINEYARD (MVY)  
RNAV (GPS) RWY 24

NE-1, 03 DEC 2020 to 31 DEC 2020