

WAAS CH <b>86400</b> <b>W35A</b>	APP CRS <b>350°</b>	Rwy Idg TDZE Apt Elev	<b>4007</b> <b>49</b> <b>49</b>
----------------------------------------	------------------------	-----------------------------	---------------------------------------

RNAV (GPS) RWY 35

NORWOOD MEMORIAL (OWD)

RNP APCH

▼

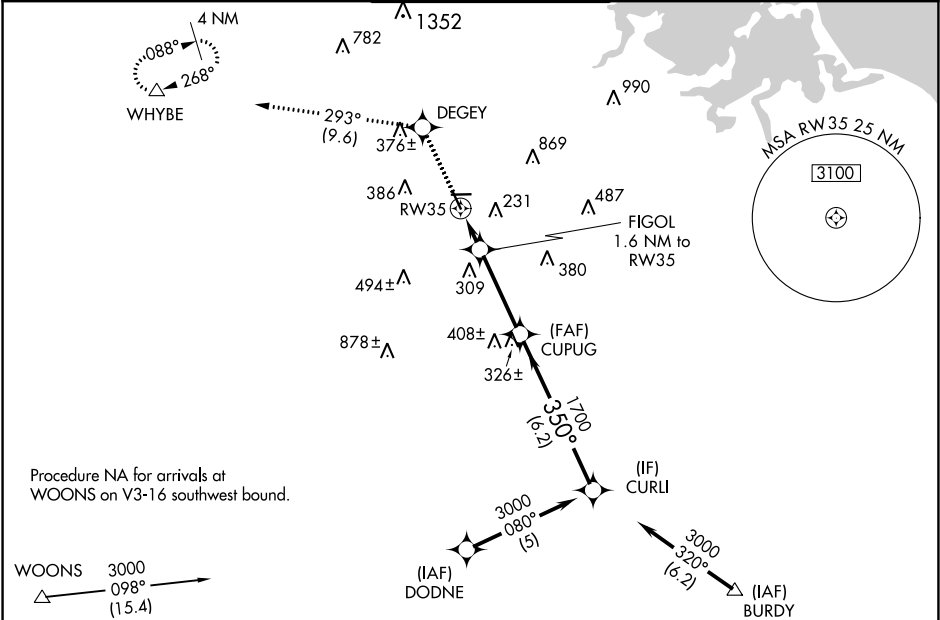
▲

Circling Rwy 17, 28, 35 NA at night. Rwy 35 helicopter visibility reduction below 1 SM NA. Inop table does not apply to LPV and LNAV/VNAV all Cats and LNAV Cats A/B and D. For uncompensated Baro-VNAV systems, LNAV/VNAV NA below -15°C or above 48°C. Straight-in Rwy 35 NA at night.

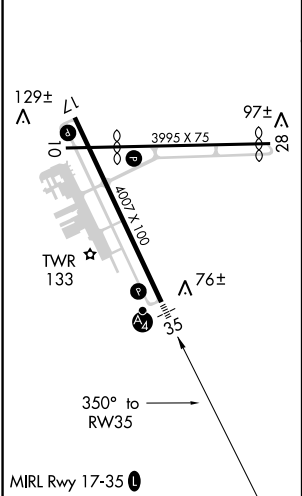
MALSF

MISSED APPROACH: Climb to 3000 direct DEGEY and on track 293° to WHYBE and hold, continue climb-in-hold to 3000.

ATIS <b>119.95</b>	BOSTON APP CON <b>124.1 263.1</b>	NORWOOD TOWER ★ <b>126.0 (CTAF) 0</b>	GND CON <b>121.8</b>	CLNC DEL <b>121.8</b>
-----------------------	--------------------------------------	------------------------------------------	-------------------------	--------------------------



ELEV <b>49</b>	<b>D</b>	TDZE <b>49</b>
----------------	----------	----------------



3000	DEGEY	tr 293°	WHYBE	
*LNAV only				
	FIGOL 1.6 NM to RW35	CUPUG 1700	350°	3000
	RW35	*600	1700	GP 3.00° TCH 40
	1.6	3.4 NM	6.2 NM	
CATEGORY	A	B	C	D
LPV DA	344-1		295 (300-1)	
LNAV/VNAV DA	594-2		545 (600-2)	
LNAV MDA	580-1	531 (600-1)	580-1¼ 531 (600-1¼)	580-1½ 531 (600-1½)
CIRCLING	600-1 551 (600-1)	700-1 651 (700-1)	1220-3	1171 (1200-3)