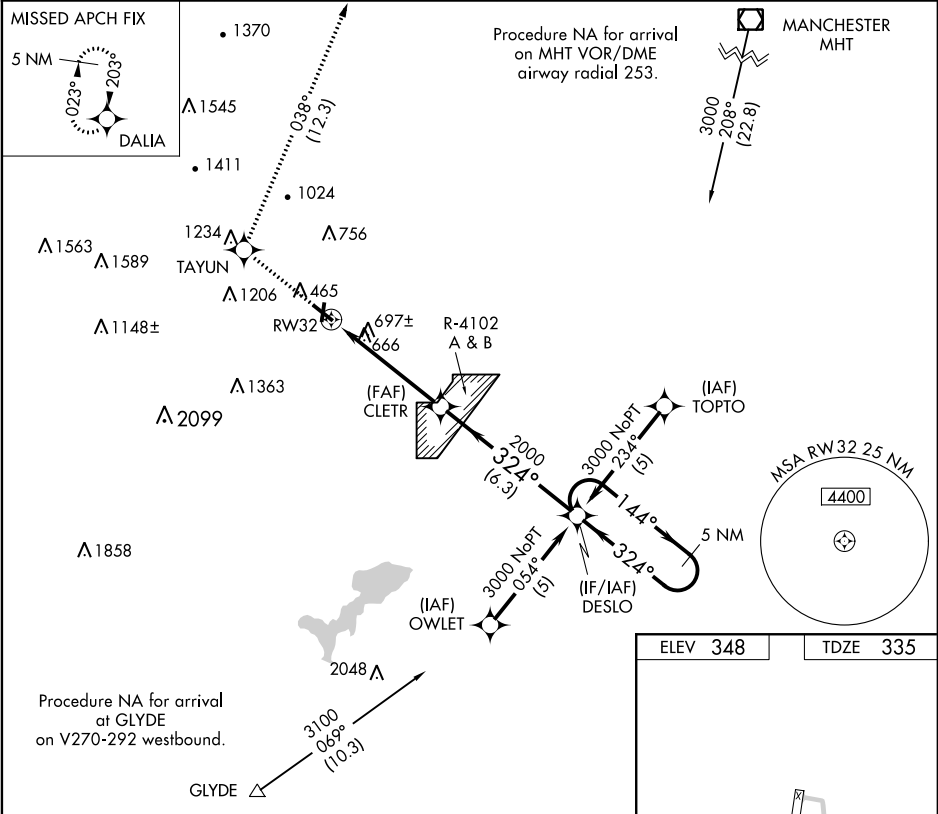


APP CRS	Rwy Idg	4268
324°	TDZE	335
	Apt Elev	348

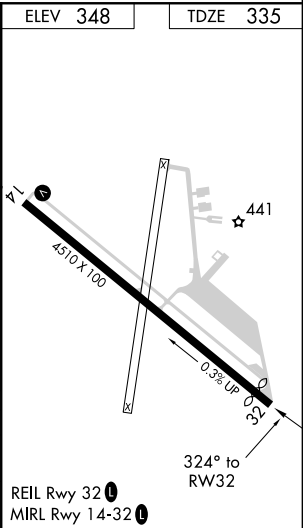
RNAV (GPS) RWY 32

FITCHBURG MUNI (FIT)

RNP APCH.		MISSED APPROACH: Climb to 3500 direct TAYUN and on track 038° to DALIA and hold.	
Rwy 32 helicopter visibility reduction below 1 SM NA. Straight-in Rwy 32 NA at night, Circling Rwy 32 NA at night. Circling NA southwest of Rwy 14-32 at night.			
-25°C			
ASOS	BOSTON APP CON	UNICOM	123.0
135.175	124.4 279.6	122.7 (CTAF)	



3500	TAYUN	tr	DALIA				
	038°						
		CLETR	DESLO	5 NM Holding Pattern			
		324°	144°	3000			
		2000	324°	3000			
		5.1 NM	6.3 NM	Visual Segment - Obstacles.			
CATEGORY	A	B	C	D			
LNAV MDA	1120-1 785 (800-1)	1120-1 ¼ 785 (800-1 ¼)	1120-2 ½ 785 (800-2 ½)	NA			
CIRCLING	1120-1 772 (800-1)	1320-1 ½ 972 (1000-1 ½)	1340-3 992 (1000-3)	NA			



NE-1, 03 DEC 2020 to 31 DEC 2020

NE-1, 03 DEC 2020 to 31 DEC 2020