

VORTAC EEN	APP CRS	Rwy Idg	6201
109.4	024°	TDZE	488
Chan 31		Apt Elev	488

VOR RWY 2

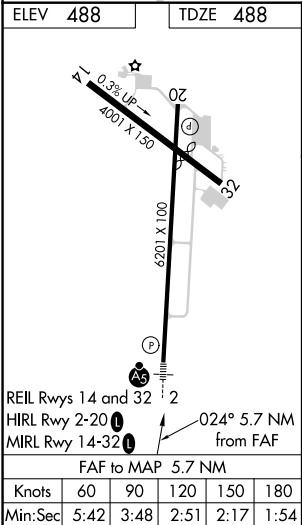
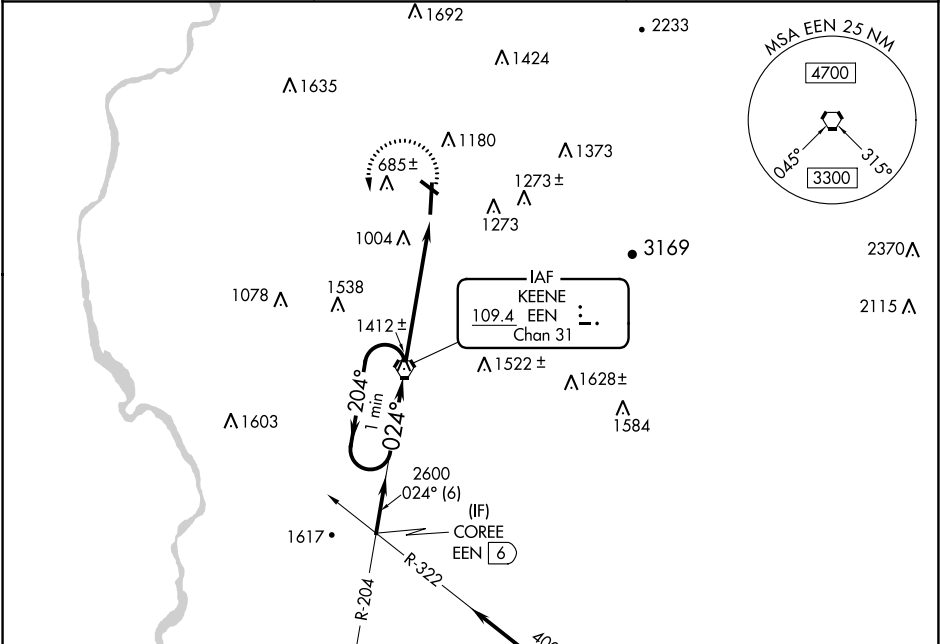
DILLANT-HOPKINS (EEN)

Inoperative table does not apply. When local altimeter not received, use Orange altimeter setting and increase all MDAs 60 feet. Circling Rwy 20, 32 NA at night. Rwy 2 helicopter visibility reduction below ¾ SM NA.

MALSR

MISSED APPROACH: Climbing left turn to 2900 direct EEN VORTAC and hold.

AWOS-3PT	BOSTON CENTER	UNICOM
119.025	123.75 338.2	123.0 (CTAF) 0



One Minute Holding Pattern			
VGSI and descent angles not coincident (VGSI Angle 3.00/TCH 39).			
2900 ← 204° 024° → 2600			
3.43° TCH 50			
5.7 NM			
CATEGORY	A	B	C
S-2	2100-1¼ 1612 (1700-1¼)	2100-1½ 1612 (1700-1½)	2100-3 1612 (1700-3)
CIRCLING	2100-1¼ 1612 (1700-1¼)	2100-1½ 1612 (1700-1½)	2100-3 1612 (1700-3)