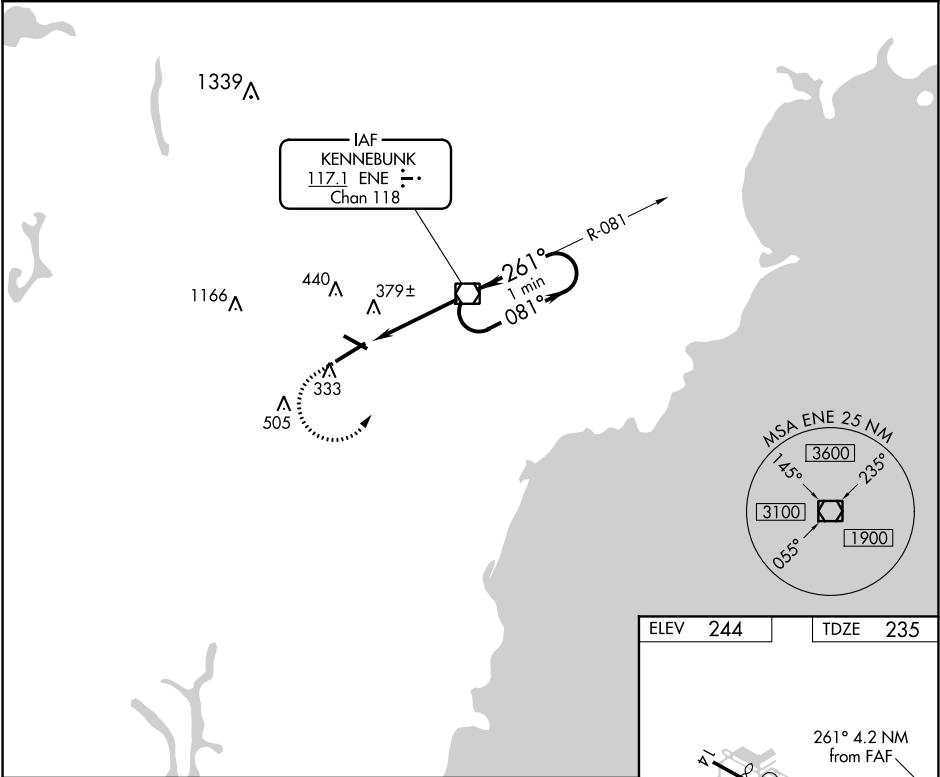


VORTAC ENE	APP CRS	Rwy Idg	6001
117.1	261°	TDZE	235
Chan 118		Apt Elev	244

VOR RWY 25  
SANFORD SEACOAST RGNL (SFM)

<p>⚠ Inoperative table does not apply to S-25 Cats A/B. For inoperative ODALS, increase S-25 Cats C/D visibility to 1<math>\frac{1}{8}</math>. When local altimeter setting not received, use Rochester, NH altimeter setting increase all MDA 40 feet, S-25 Cats C/D visibility <math>\frac{1}{8}</math> SM, and Circling Cat C visibility <math>\frac{1}{4}</math> SM; for inop ODALS, increase S-25 Cats C/D visibility to 1<math>\frac{3}{8}</math>. Rwy 25 helicopter visibility reduction below <math>\frac{3}{4}</math> SM NA. Rwy 32 helicopter visibility reduction below 1 SM NA.</p>	<p>ODALS</p> <p>⬇</p>	<p>MISSED APPROACH: Climb to 800 then climbing left turn to 2000 direct ENE VOR/DME and hold.</p>
---	-----------------------	---

AWOS-3PT 120.025	PORTLAND APP CON ★ 119.75 269.35	CLNC DEL 121.725	UNICOM 123.075 (CTAF) 0
---------------------	-------------------------------------	---------------------	----------------------------



800	2000	ENE	ENE VOR/DME	One Minute Holding Pattern
		ENE 3.1	ENE 4.2	261° 1700
		1.1	3.1 NM	081° 2000
				261°
CATEGORY	A	B	C	D
S-25	640-1	405 (400-1)		
CIRCLING	760-1 516 (600-1)	1180-2 $\frac{3}{4}$ 936 (1000-2 $\frac{3}{4}$ )	1240-3 996 (1000-3)	

ELEV 244	TDZE 235
REIL Rwy 7 0	
HIRL Rwy 7-25 0	
MIRL Rwy 14-32 0	
FAF to MAP 4.2 NM	
Knots	60 90 120 150 180
Min:Sec	4:12 2:48 2:06 1:41 1:24