

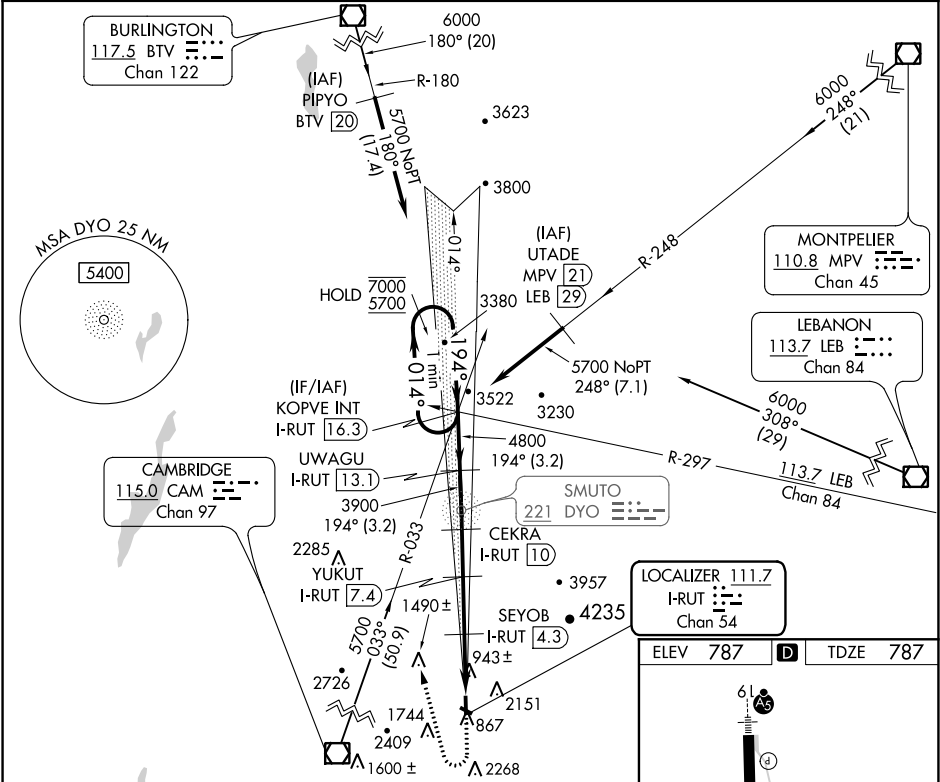
LOC/DME	I-RUT	APP CRS	Rwy Idg	5003
111.7		194°	TDZE	787
Chan 54			Apt Elev	787

ILS Z or LOC Z RWY 19

RUTLAND-SOUTHERN VERMONT RGNL (RUT)

DME required.	MALSR	MISSED APPROACH: Climb to 1900 then climbing right turn to 5700 on heading 360° and CAM VOR/DME R-033 to KOPVE INT/I-RUT 16.31 DME and hold. # Missed approach requires minimum climb of 425 feet per NM to 3200; if unable to meet climb gradient, see ILS Y or LOC Y Rwy 19.
<div><div>▼</div><div>▲</div><div>⊞</div></div> <div>Circling to Rwy 13, 31 NA at night. Circling NA northeast of Rwy 19 and 31. For inop ALS, increase S-ILS 19 visibility all Cats to 1½ SM, and increase S-LOC 19 Cat C/D visibility to 2 SM.</div>	<div><div>AS</div><div>⏏</div></div>	

AWOS-3PT	BOSTON CENTER	UNICOM
118.375	135.7 282.2	122.8 (CTAF) 0



One Minute Holding Pattern		1900	5700	CAM R-033	KOPVE INT
KOPVE INT I-RUT 16.3		↑	hdg 360°		
7000 5700		014°	194°		
GS 3.20° TCH 54					
3.2 NM		3.2 NM	2.5 NM	3.1 NM	2.3 NM
CATEGORY		A	B	C	D
S-ILS 19 #		1451-1½	664 (700-1½)		
S-LOC 19 #		1520-½	733 (800-½)	1520-1½	733 (800-1½)
CIRCLING		2160-1¼	2160-½	2520-3	2760-3
		1373 (1400-1¼)	1373 (1400-½)	1733 (1800-3)	1973 (2000-3)

