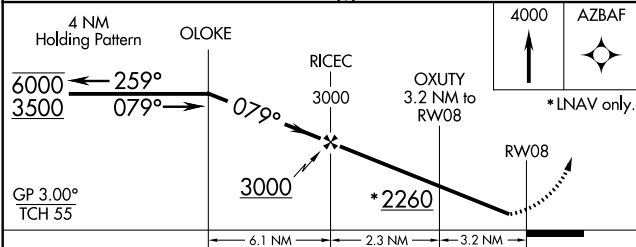
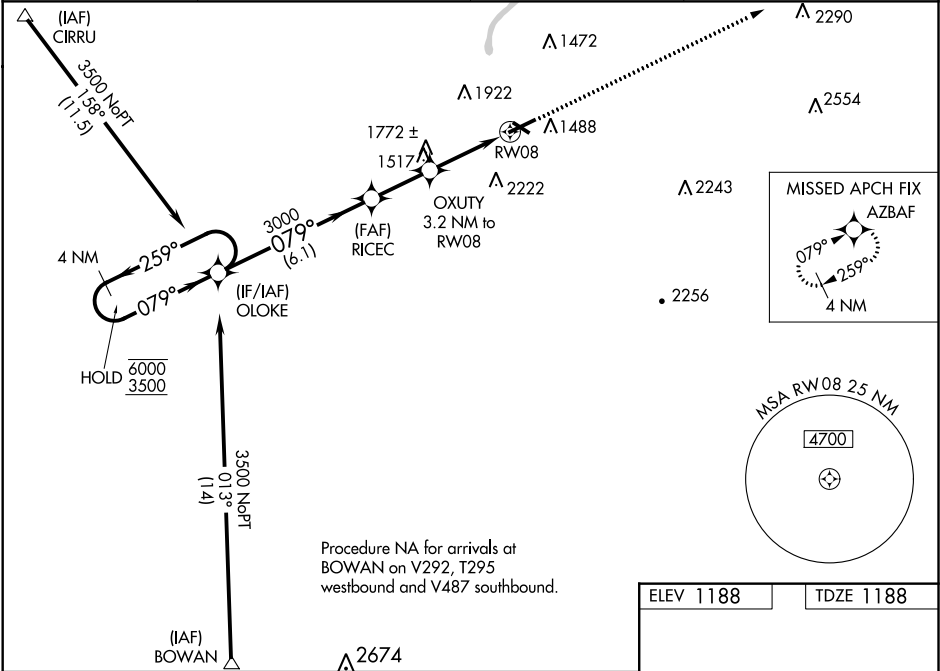


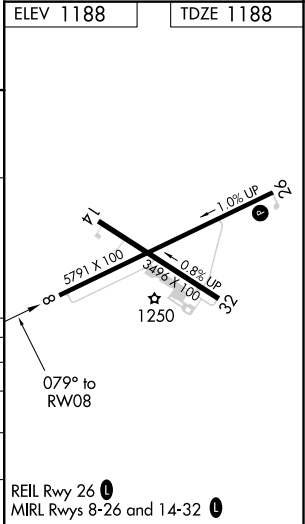
WAAS CH <b>93935</b> <b>W08A</b>	APP CRS <b>079°</b>	Rwy Idg TDZE <b>1188</b> Apt Elev <b>1188</b>
--	------------------------	---

**RNAV (GPS) RWY 8**  
PITTSFIELD MUNI (PSF')

RNP APCH. <div><div>▼</div><div>▲</div></div> <p>Rwy 8 helicopter visibility reduction below 1 SM NA. Baro-VNAV NA when using North Adams altimeter setting. For uncompensated Baro-VNAV systems, LNAV/VNAV NA below -20°C or above 54°C. When local altimeter setting not received, use North Adams altimeter setting: increase LPV DA to 1589 feet and all visibilities ¼ SM, increase LNAV/VNAV DA to 2186 feet and all visibilities 1 SM, increase all MDAs 120 feet and visibility Cat A ¼ SM. Circling NA South of Rwy 8 and 32.</p>			MISSED APPROACH: Climb to 4000 direct AZBAF and hold.
ASOS 135.375	ALBANY APP CON 132.825 307.2	CLNC DEL 128.6	UNICOM 122.7 (CTAF) 0



CATEGORY	A	B	C	D
LPV DA	1475-1		287 (300-1)	
LNAV/VNAV DA	2072-3		884 (900-3)	
LNAV MDA	2000-1 812 (900-1)	2000-1¼ 812 (900-1¼)	2000-2½	812 (900-2½)
CIRCLING	2000-1¼ 812 (900-1¼)	2160-1½ 972 (1000-1½)	2400-3 1212 (1300-3)	2680-3 1492 (1500-3)



NE-1, 03 DEC 2020 to 31 DEC 2020

NE-1, 03 DEC 2020 to 31 DEC 2020