

WAAS CH 86305 W22A	APP CRS 224°	Rwy Idg 5200 TDZE 83 Apt Elev 83
--	------------------------	---

RNAV (GPS) RWY 22


HANCOCK COUNTY-BAR HARBOR (BHB)

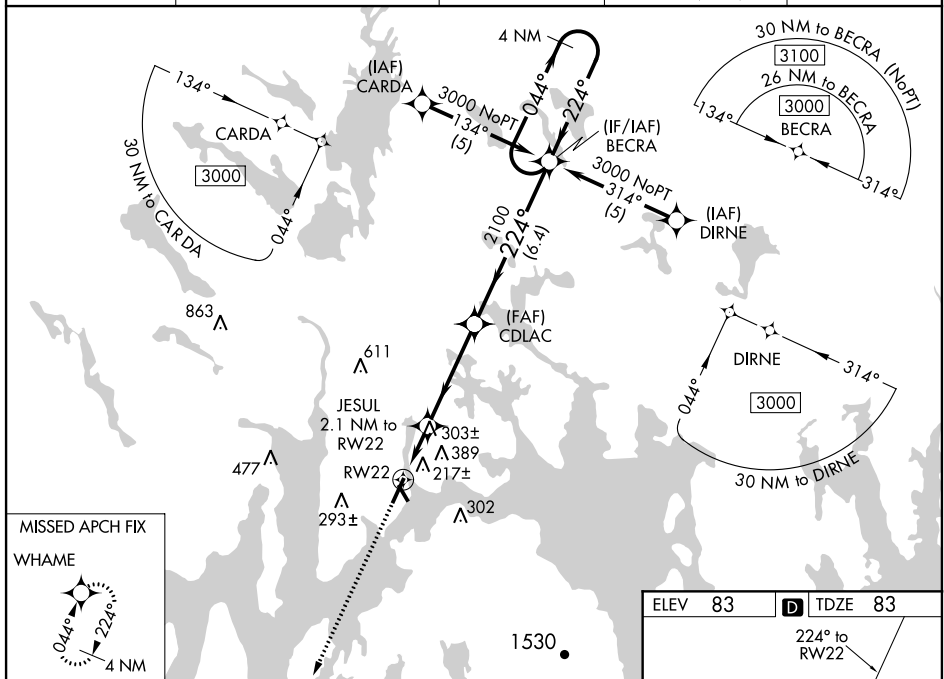
T Baro-VNAV NA when using Bangor altimeter setting. DME/DME RNP-0.3 NA. When local altimeter setting not received, use Bangor altimeter setting and increase all DA 83 feet and all MDA 100 feet; increase LPV all Cats and LNAV/VNAV all Cats and LNAV Cats C/D and Circling Cats C/D visibilities $\frac{1}{4}$ mile. VDP NA with Bangor altimeter setting. Inoperative table does not apply to LNAV/VNAV all Cats and LNAV Cat C. When using Bangor altimeter setting, inoperative table does not apply to LNAV/VNAV all Cats and LNAV Cat C. For uncompensated Baro-VNAV systems, LNAV/VNAV NA below -15°C (5°F) or above 49°C (120°F). Circling to Rwy 17 NA at night.

MALSF



MISSED APPROACH:
Climb to 2900 direct
WHAME and hold.

AWOS-3PT 118.35	BANGOR APP CON 133.6 284.65	CLNC DEL 119.9	UNICOM 123.0 (CTAF)	122.7 
---------------------------	---------------------------------------	--------------------------	-------------------------------	--

[illegible][illegible]