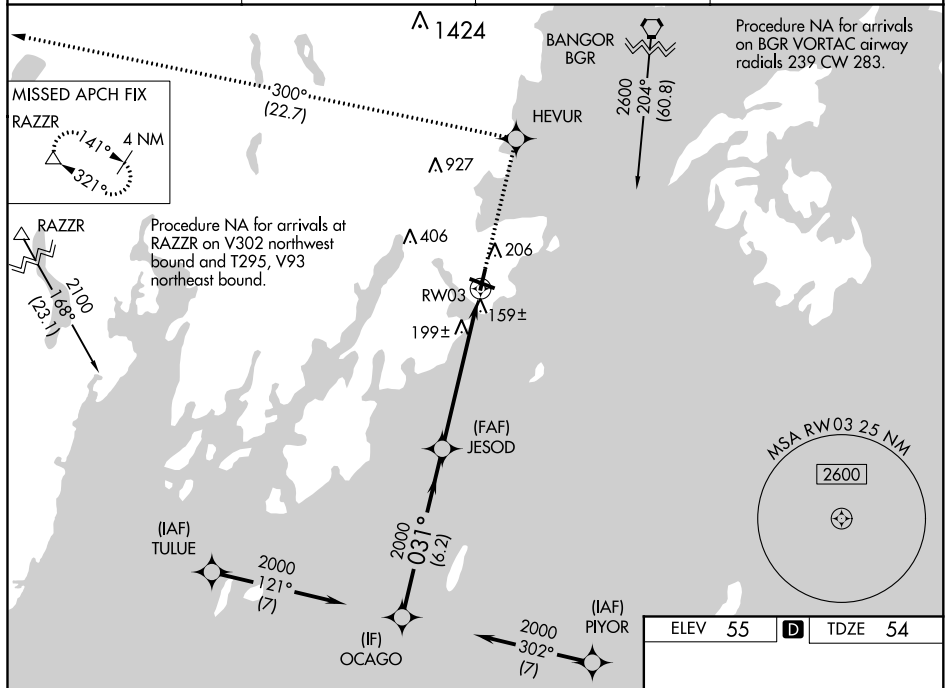


RNAV (GPS) RWY 3
KNOX COUNTY RGNL (RKD)

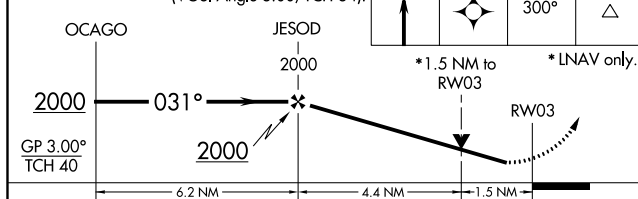
A For uncompensated Baro-VNAV systems, LNAV/VNAV NA below -15°C or above 54°C.

MISSED APPROACH: Climb to 3000 direct HEVUR and on track 300° to RAZZR and hold.

AWOS-3PT 119.025	PORTLAND APP CON ★ 120.4 299.2	CLNC DEL 123.8	UNICOM 123.05 (CTAF) 0
----------------------------	--	--------------------------	----------------------------------



VGSI and RNAV glidepath not coincident
(VGSI Angle 3.00/TCH 34).



CATEGORY	A	B	C	D
LPV DA	374-1 ¼ 320 (400-1¼)			
LNAV/VNAV DA	459-1 ½ 405 (500-1½)			
LNAV MDA	560-1 506 (600-1)	560-1 506 (600-1½)	560-1 506 (600-1½)	560-1 506 (600-1½)
C CIRCLING	600-1 545 (600-1)	720-1 665 (700-1¾)	1140-3	1085 (1100-3)

