

WAAS CH 87027 W32A	APP CRS 322°	Rwy Idg 3510 TDZE 545 Apt Elev 556
--	------------------------	---

RNAV (GPS) RWY 32

ORANGE MUNI (O.R.E.)

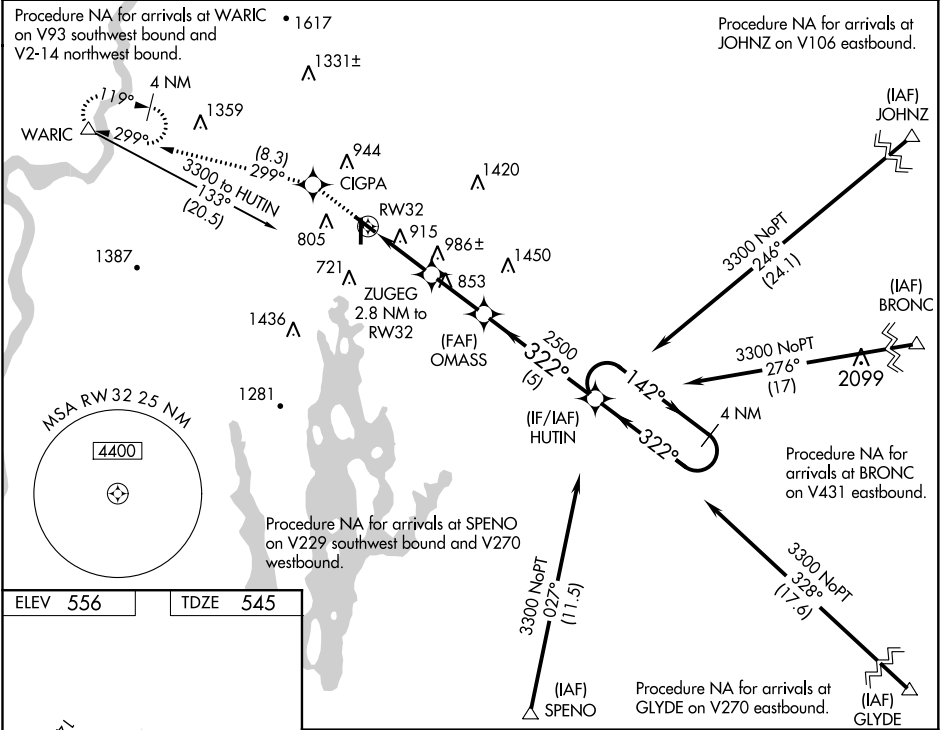
⚠

⚠

Circling to Rwy 1-19 NA at night. For uncompensated Baro-VNAV systems, LNAV/VNAV NA below -16°C (4°F) or above 54°C (130°F). DME/DME RNP-0.3 NA. Helicopter visibility reduction below 3/4 SM NA. Baro-VNAV and VDP NA when using Keene altimeter setting. When local altimeter setting not received, use KEENE altimeter setting and increase all DA 55 feet and all MDA 60 feet; increase LPV all Cats visibility 1/8 mile, LNAV/VNAV all Cats and LNAV and Circling Cat B visibility 1/4 mile.

MISSED APPROACH:
Climb to 3500 direct
CIGPA and on track
299° to WARIC and
hold, continue climb-
in-hold to 3500.

ASOS 135.675	BOSTON CENTER 123.75 338.2	UNICOM 122.8 (CTAF) 0
------------------------	--------------------------------------	---------------------------------



MRL Rwy 1-19 and 14-32 ①

* LNAV only.		ZUGEG 2.8 NM to RW32		OMASS 2500		HUTIN		4 NM Holding Pattern	
RW32		*1.8 NM to RW32		*1600		2500		142° → 3300	
								← 322°	
								GP 3.50° TCH 45	

NE-1, 03 DEC 2020 to 31 DEC 2020

NE-1, 03 DEC 2020 to 31 DEC 2020