

WAAS CH 77539	APP CRS 004°	Rwy Idg TDZE 620	4003
W01A		Apt Elev 620	

RNAV (GPS) RWY 1

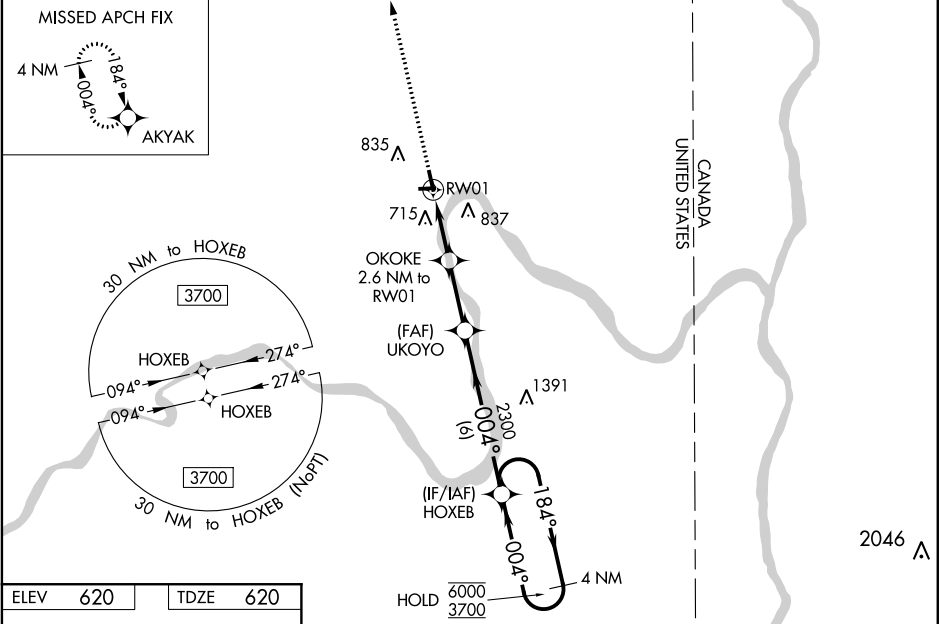
CARIBOU MUNI (CAR)

RNP APCH.

Rwy 1 helicopter visibility reduction below 1 SM NA. Baro-VNAV NA when using Presque Isle altimeter setting. For uncompensated Baro-VNAV systems, LNAV/VNAV NA below -21°C or above 54°C. Straight-in Rwy 1 NA at night. Circling Rwy 1, 11, 29 NA at night. When local altimeter setting not received, use Presque Isle altimeter setting and increase all DAs 49 feet and all MDAs 60 feet. Increase LNAV MDA Cat C & D visibility $\frac{1}{8}$ SM, Circling Cat D visibility $\frac{1}{4}$ SM.

MISSED APPROACH:
Climb to 3000 direct AKYAK and hold.

ASOS 135.125	BOSTON CENTER 124.75 239.05	CLNC DEL 124.75	UNICOM 122.8 (CTAF) 0
------------------------	---------------------------------------	---------------------------	---------------------------------



ELEV 620

TDZE 620

61

702

62

3016 X 75

004° to RW01

MIRL Rwy 1-19 and 11-29 0

3000

AKYAK

* LNAV only

RW01

2.6 NM

2.6 NM

6 NM

UKOYO

2300

OKOKE

2.6 NM to RW01

*1480

2300

004°

184°

4 NM

Holding Pattern

6000

3700

GP 3.00°

TCH 40

CATEGORY	A	B	C	D
LPV DA		870-1	250 (300-1)	
LNAV/VNAV DA		872-1	252 (300-1)	
LNAV MDA		980-1	360 (400-1)	
CIRCLING	1140-1	520 (600-1)	1140-1½ 520 (600-1½)	1400-2½ 780 (800-2½)