

LOC I-ASH	APP CRS	Rwy Idg	5650
109.7	139°	TDZE	200
		Apt Elev	200

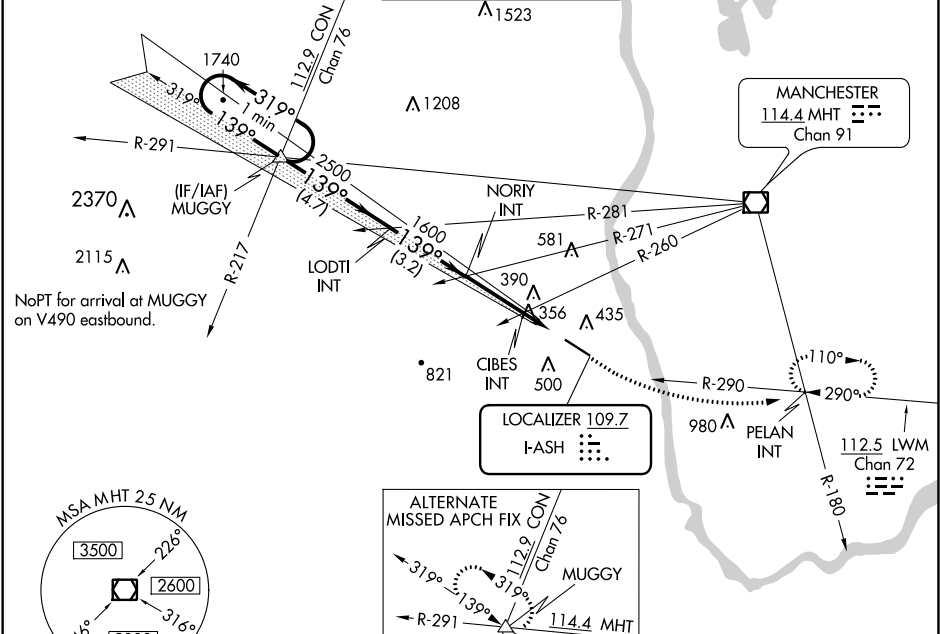
ILS or LOC RWY 14
BOIRE FIELD (ASH)

⚠ When local altimeter setting not received, use Manchester altimeter: increase all DA to 432 feet; increase all MDA 40 feet and all S-LOC 14 Cat C/D visibilities ½ SM and all Circling Cat D visibilities ¼ SM. For inoperative ALS when using Manchester altimeter setting, increase CIBES fix minimums S-LOC 14 Cat C/D visibility to 1½ SM.

MALSR

MISSED APPROACH: Climb to 800 then climbing left turn to 2000 on heading 130° and LWM VOR/DME R-290 to PELAN INT and hold.

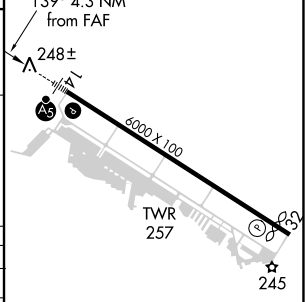
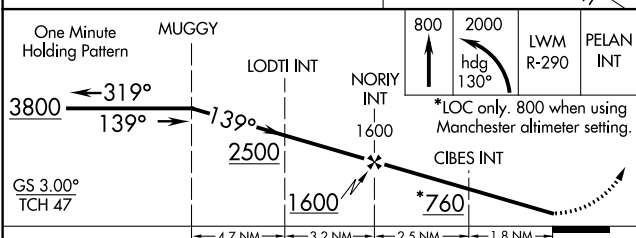
ATIS 125.1	BOSTON APP CON 124.9 269.075	NASHUA TOWER ★ 133.2 (CTAF) 1	GND CON 121.8	CLNC DEL 121.8
---------------	---------------------------------	----------------------------------	------------------	-------------------



MSA MHT 25 NM

ALTERNATE MISSED APCH FIX

ELEV 200 **D** TDZE 200



CATEGORY	A	B	C	D
S-ILS 14	400-½ 200 (200-½)			
S-LOC 14	760-½ 560 (600-½)	760-1½ 560 (600-1½)		
C CIRCLING	820-1 620 (700-1)	840-1 640 (700-1)	900-2 700 (700-2)	1000-2½ 800 (800-2½)
CIBES FIX MINIMUMS (DUAL VOR RECEIVERS REQUIRED)				
S-LOC 14	660-½ 460 (500-½)	660-7⁄8 460 (500-7⁄8)		
C CIRCLING	820-1 620 (700-1)	840-1 640 (700-1)	900-2 700 (700-2)	1000-2½ 800 (800-2½)

HIRL Rwy 14-32 1					
REIL Rwy 32 1					
FAF to MAP 4.3 NM					
Knots	60	90	120	150	180
Min:Sec	4:18	2:52	2:09	1:43	1:26

NE-1, 03 DEC 2020 to 31 DEC 2020

NE-1, 03 DEC 2020 to 31 DEC 2020